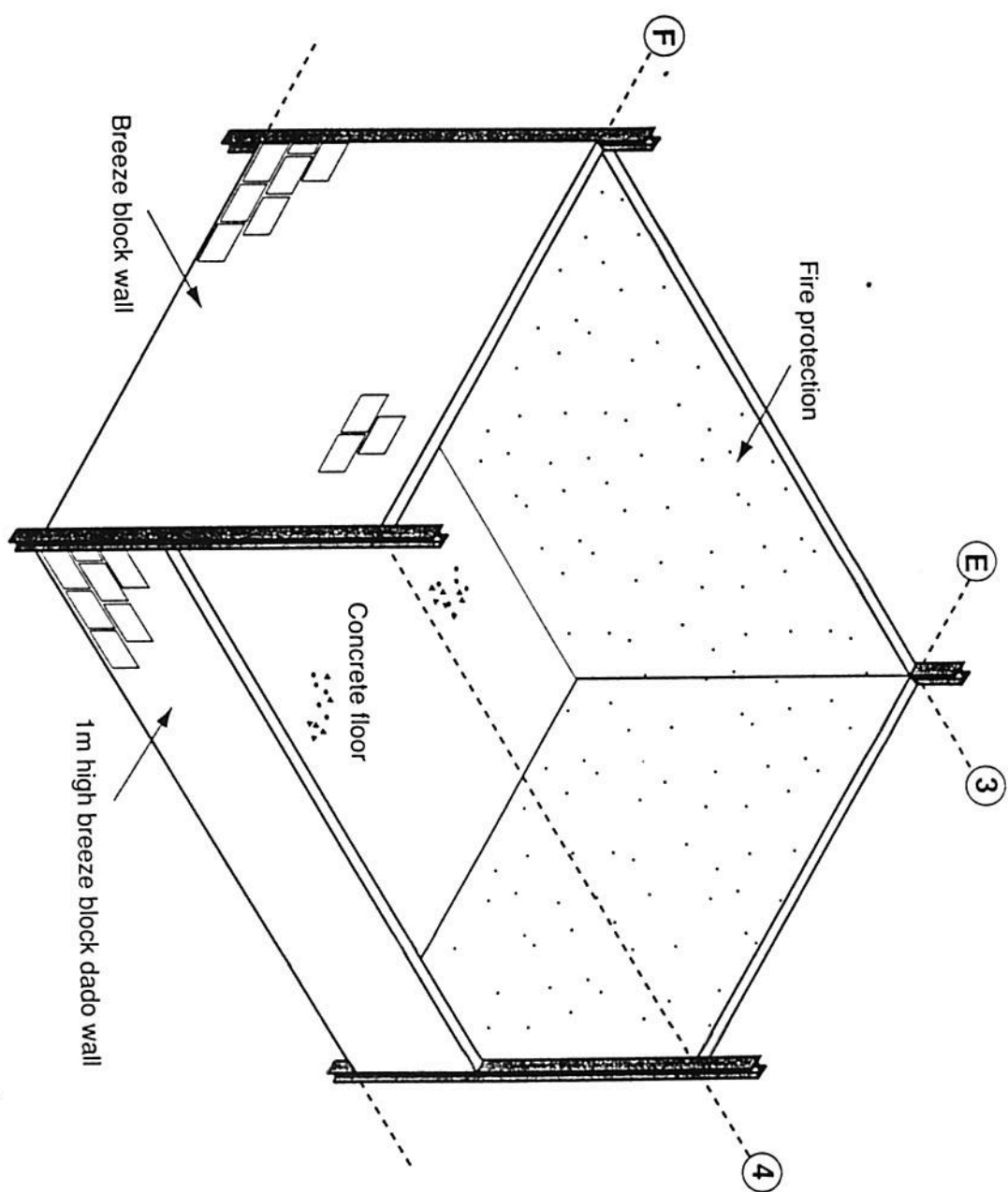
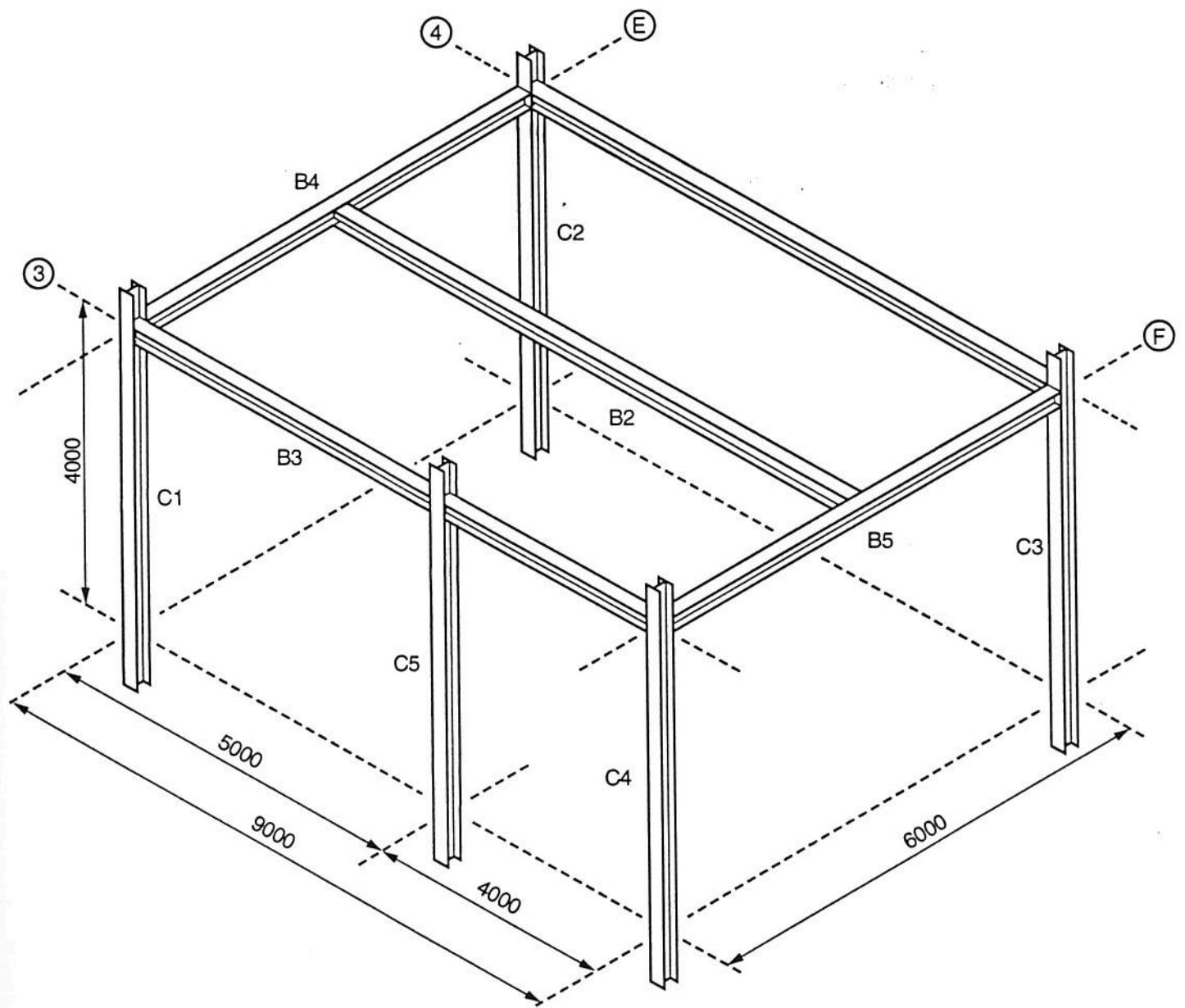


Fig 1 Proposed corner compartment test



**Figure 2** 3D view of corner compartment



**Figure 3** Location of beams and columns

# PLAN OF 2nd - 3rd FLOOR STEEL

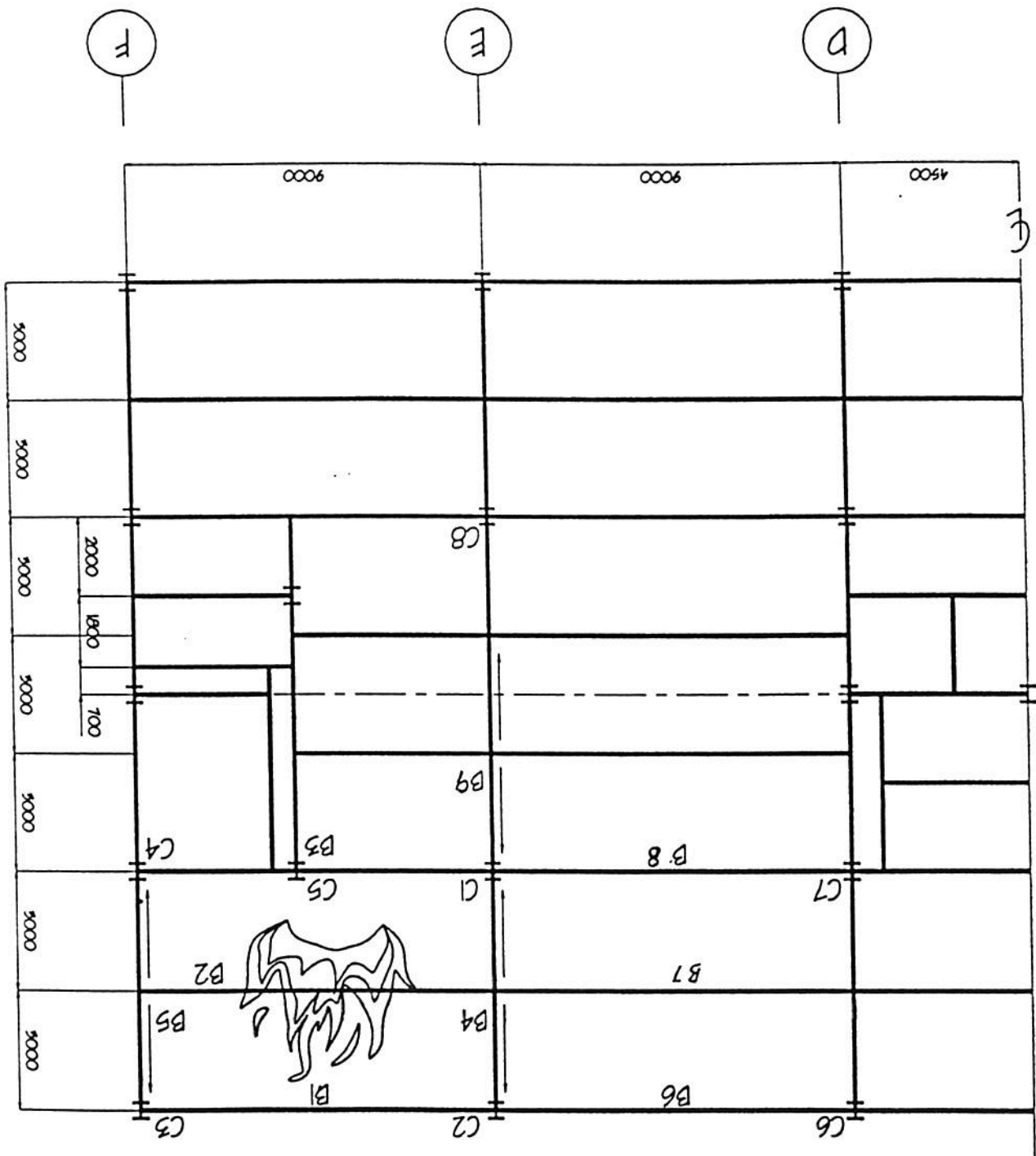


Figure 4.

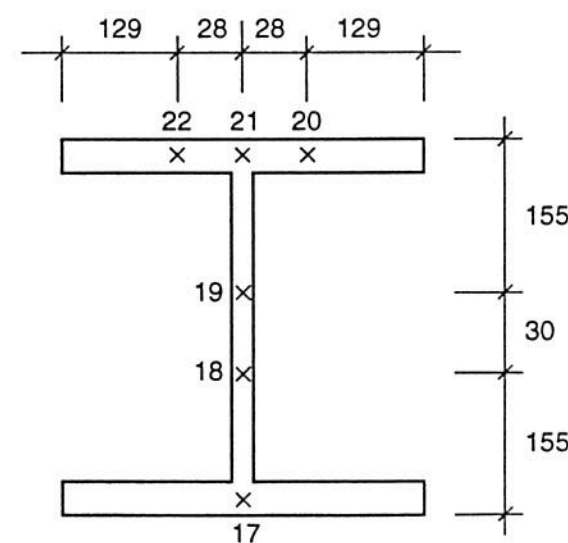
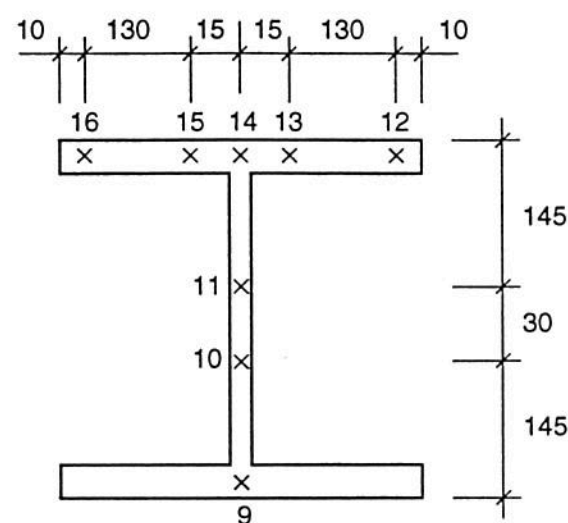
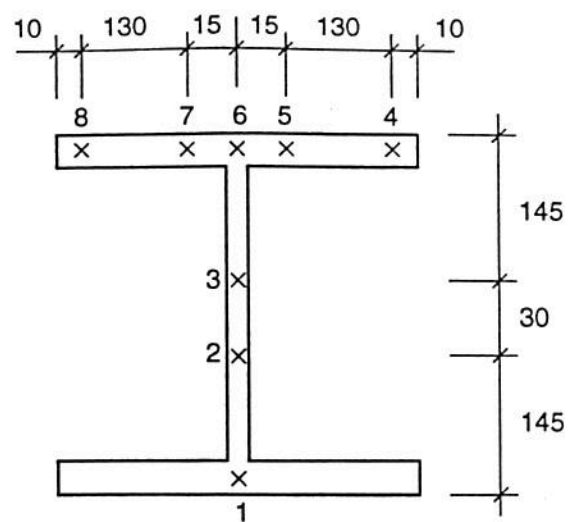
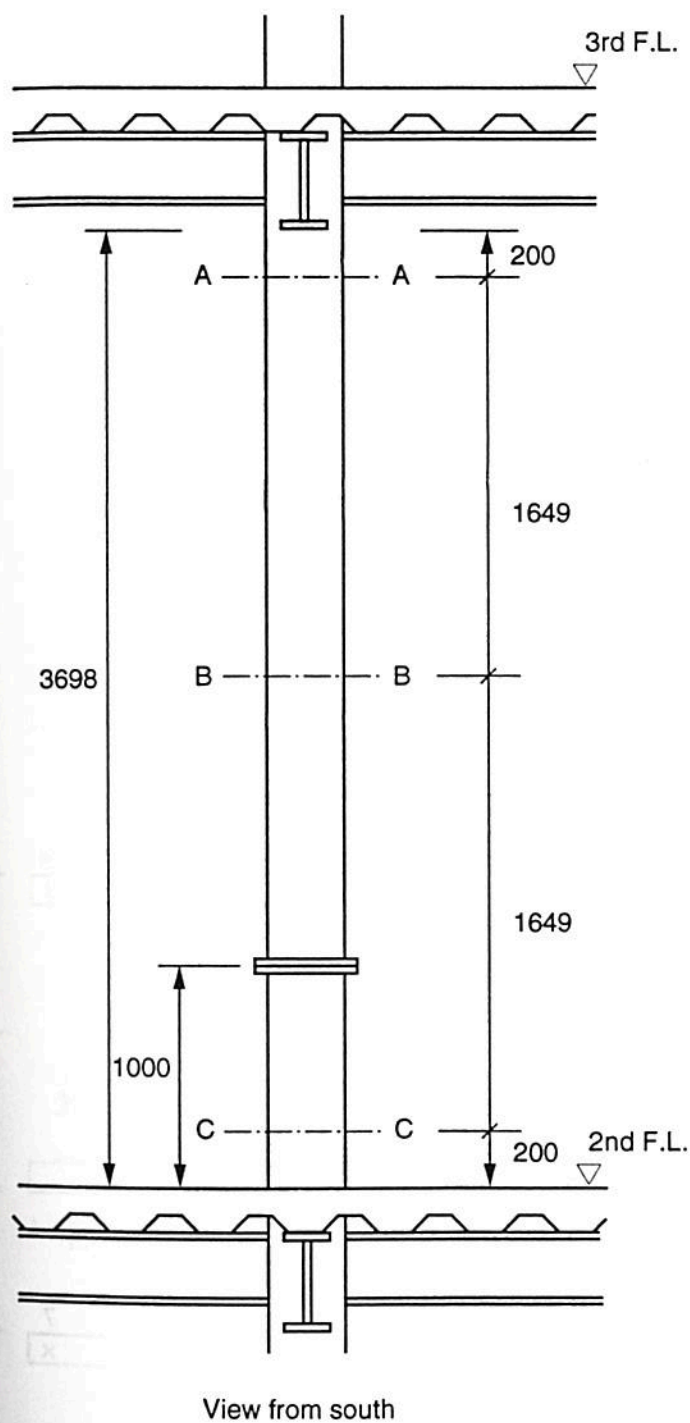
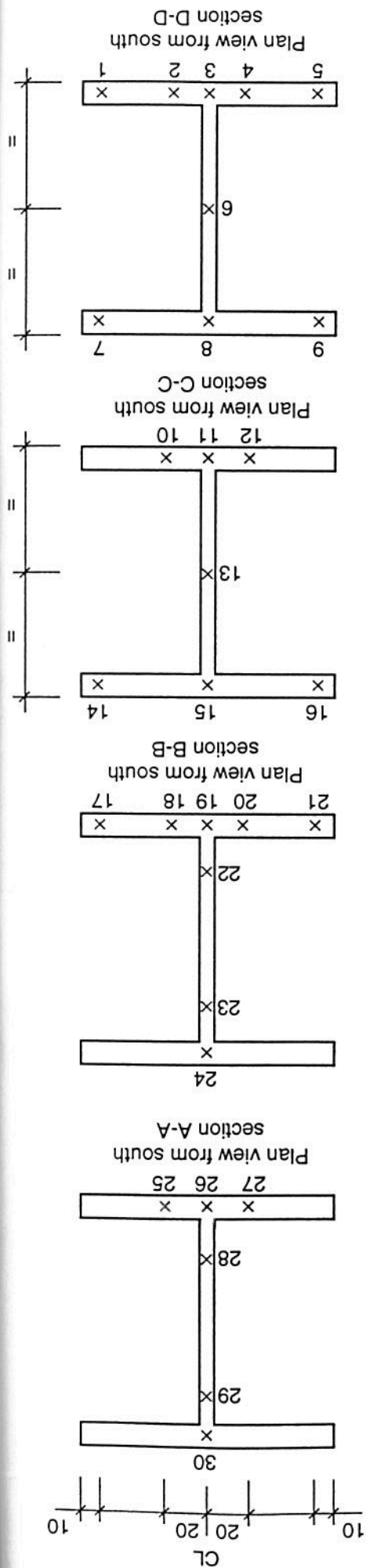
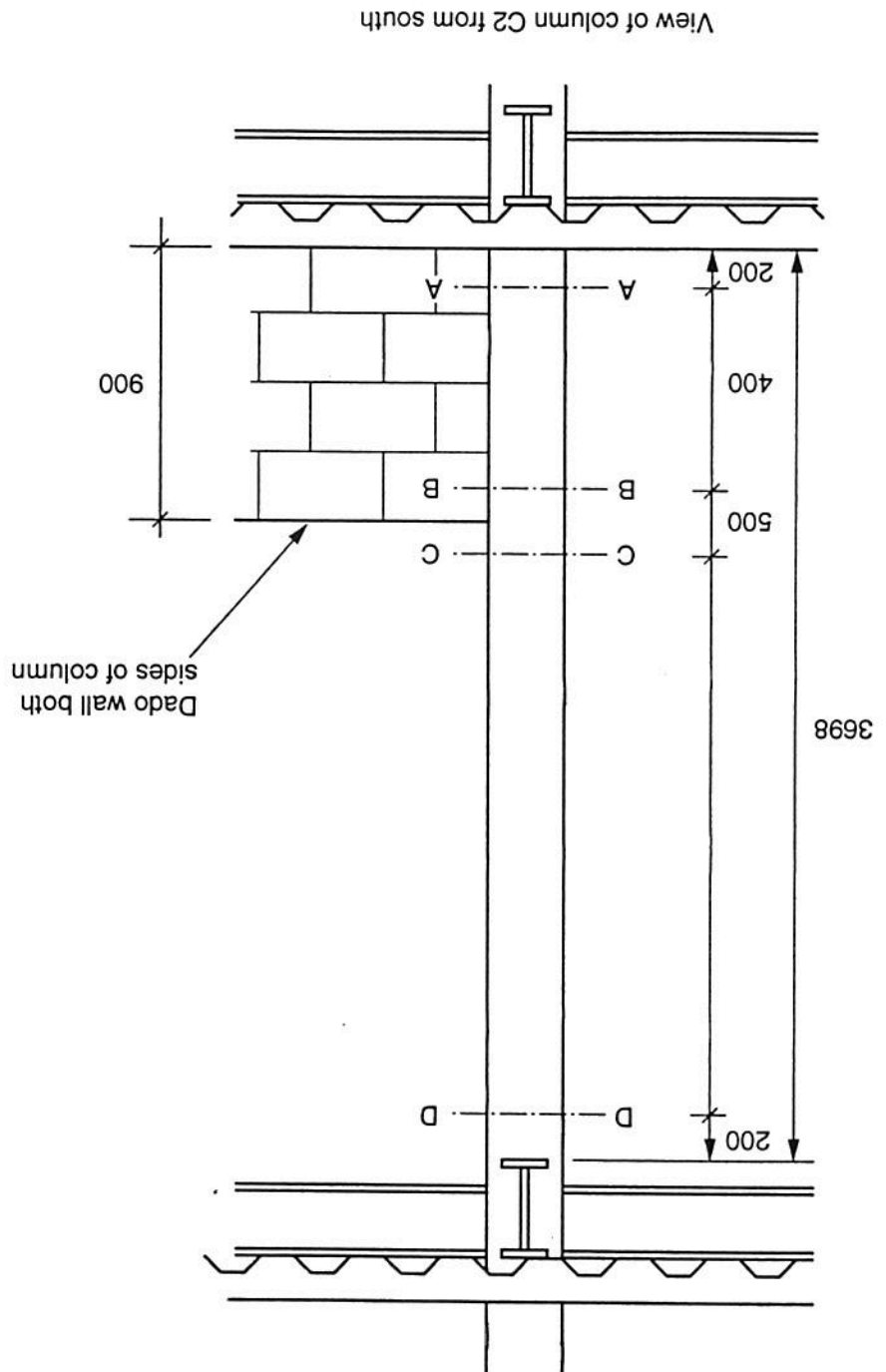
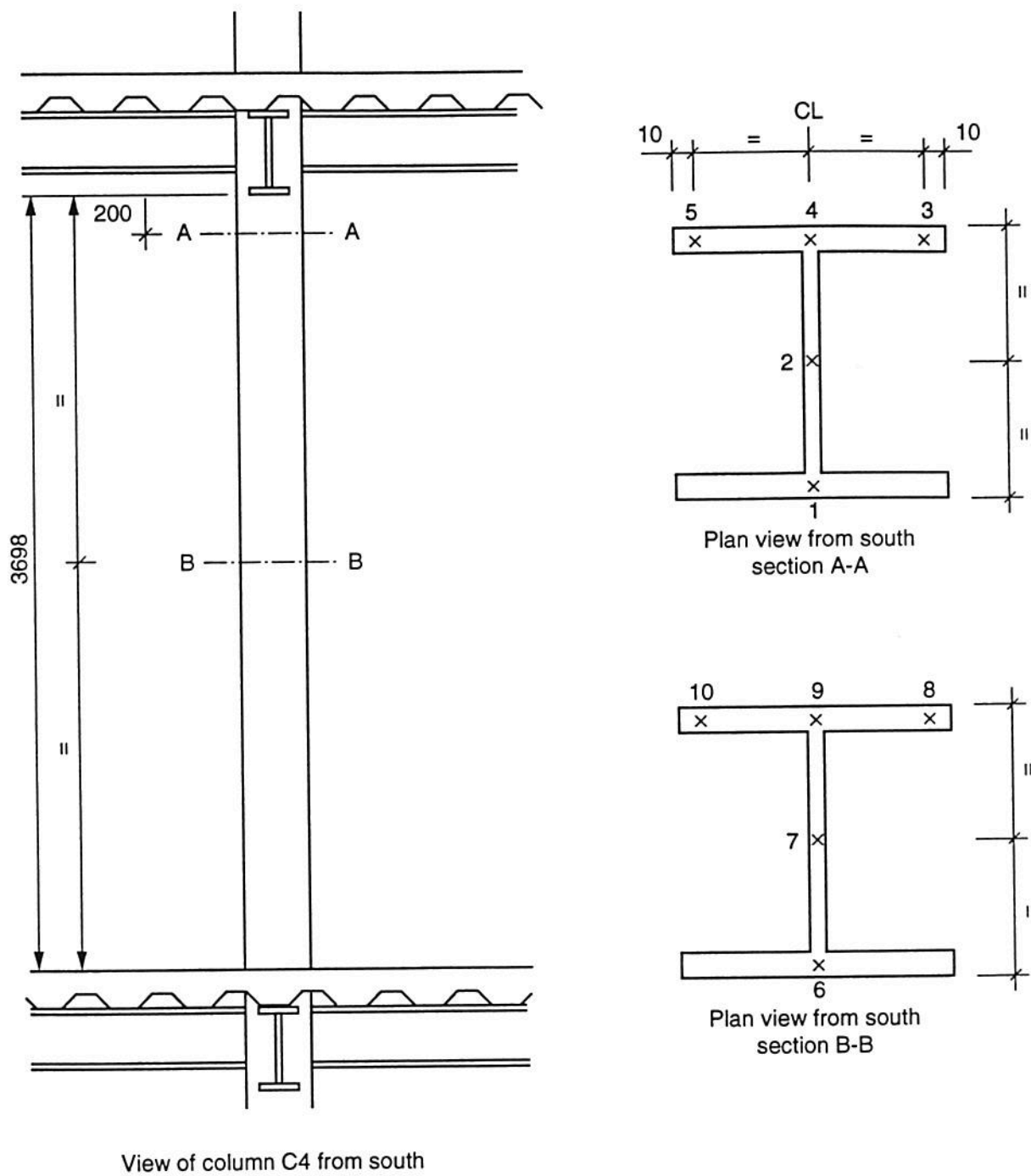


Figure 5 Thermocouple locations for column CI (E3)



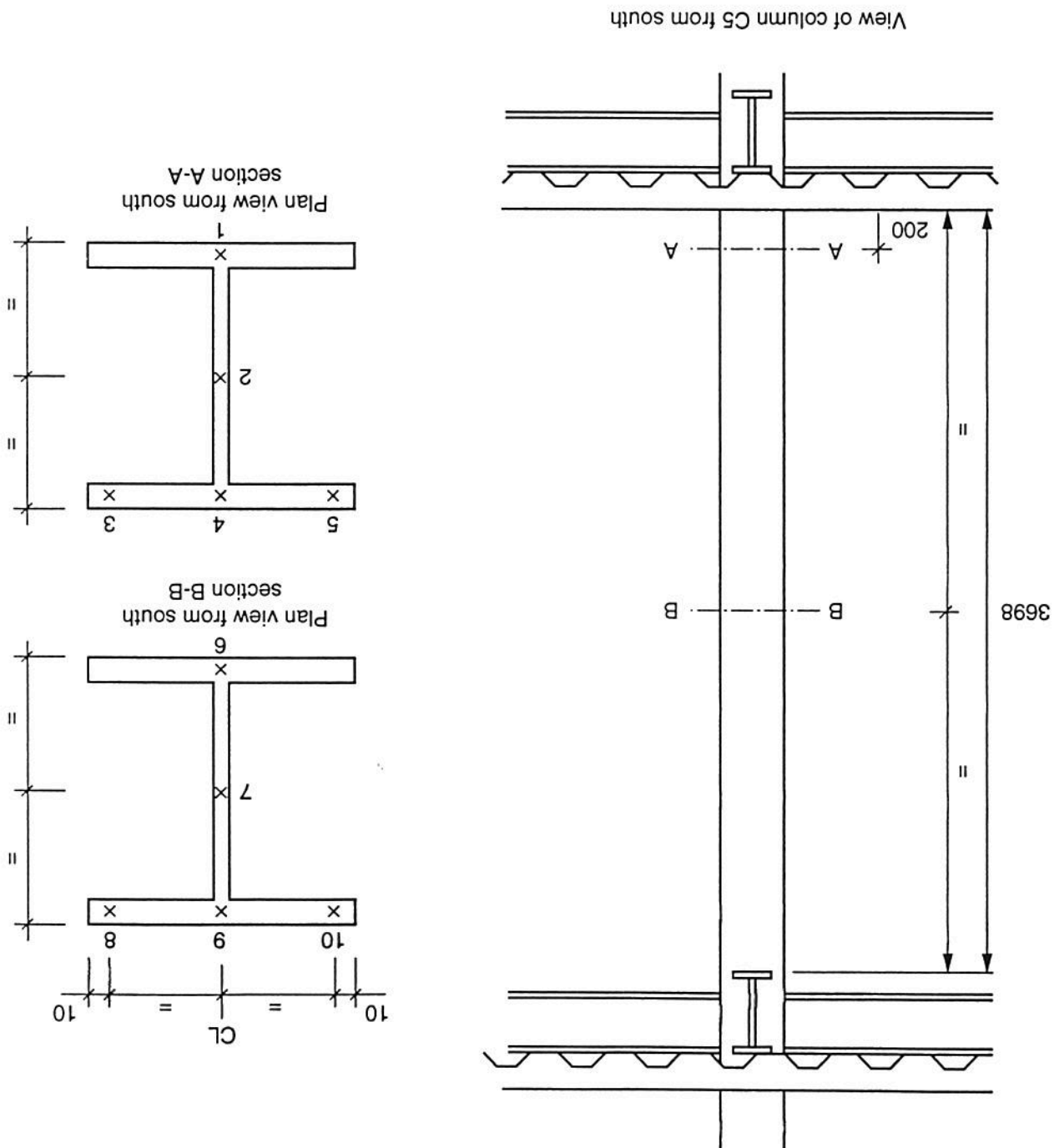
Figure 6 Thermocouple locations for columns C2 and C3 (E4 and F4)



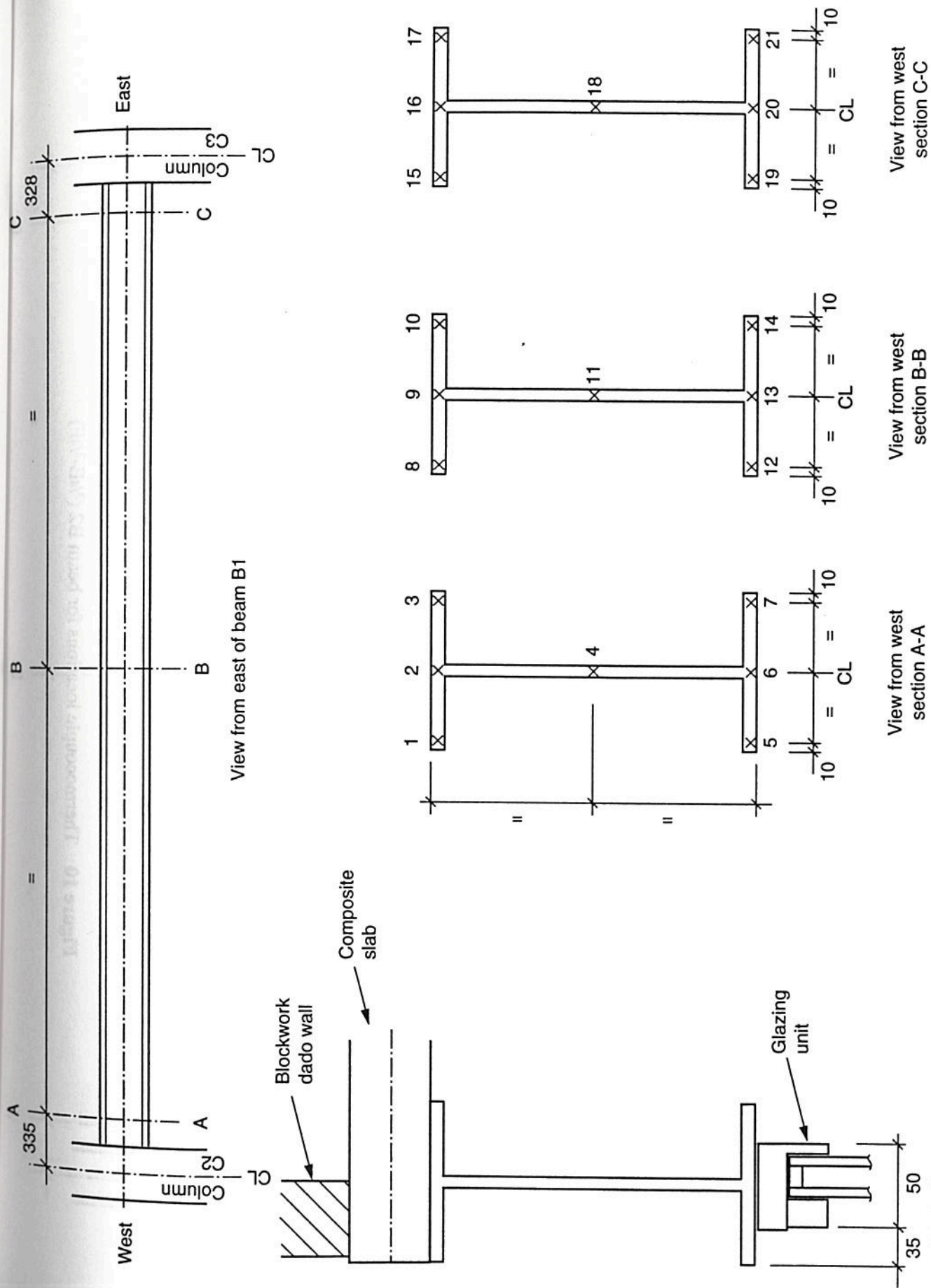


**Figure 7** Thermocouple locations for column C4 (F3)

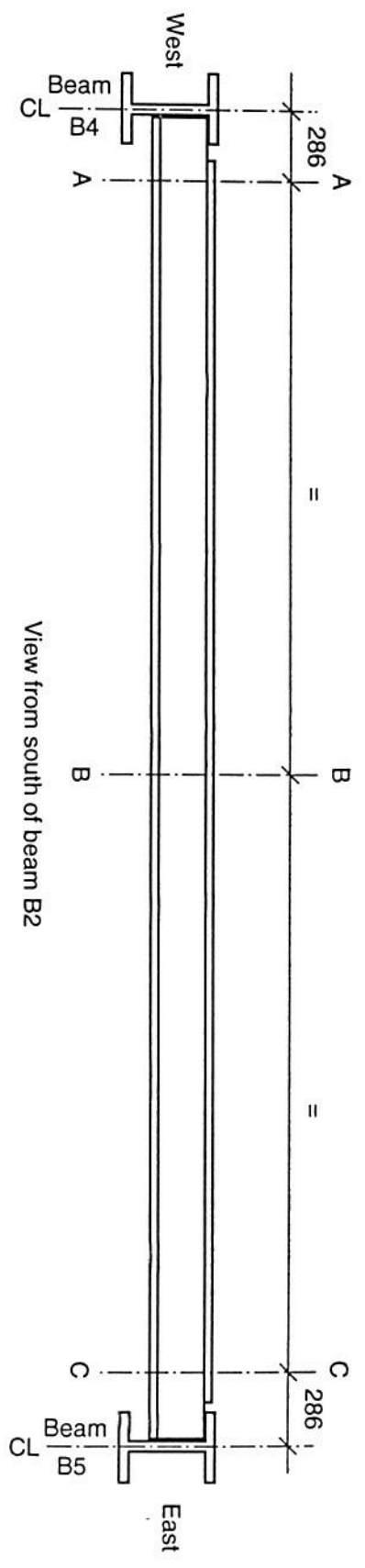
Figure 8 Thermocouple locations for column C5 (E/F3)







**Figure 9** Thermocouple locations for beam B1 (E4-F4)



View from south of beam B2

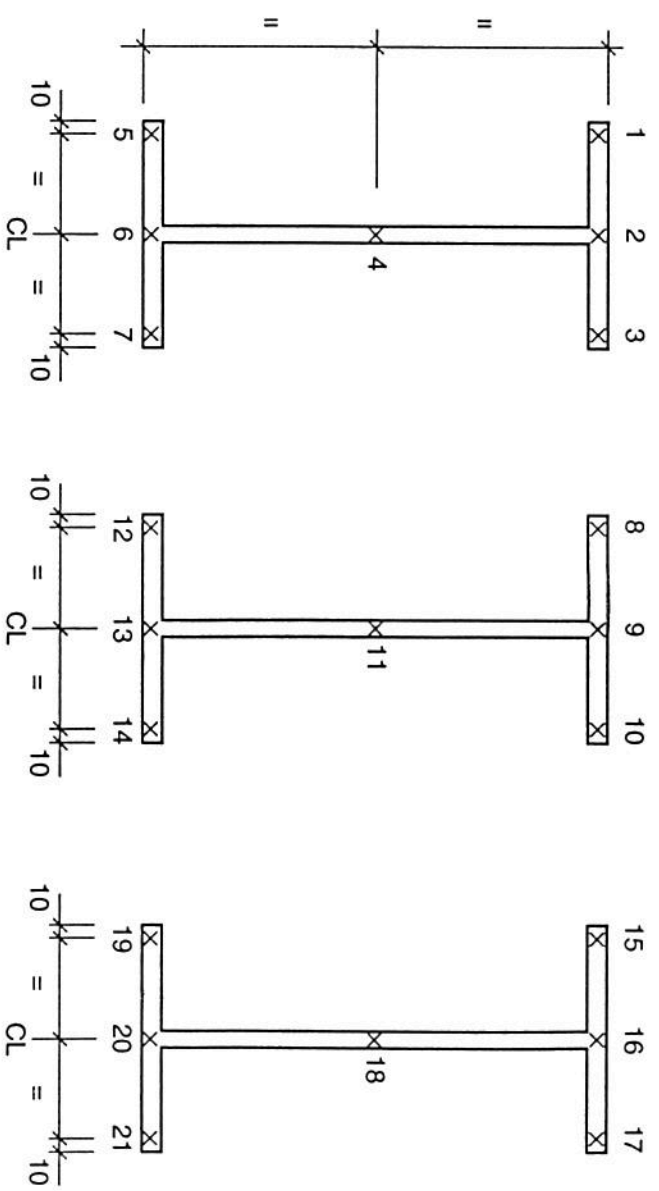
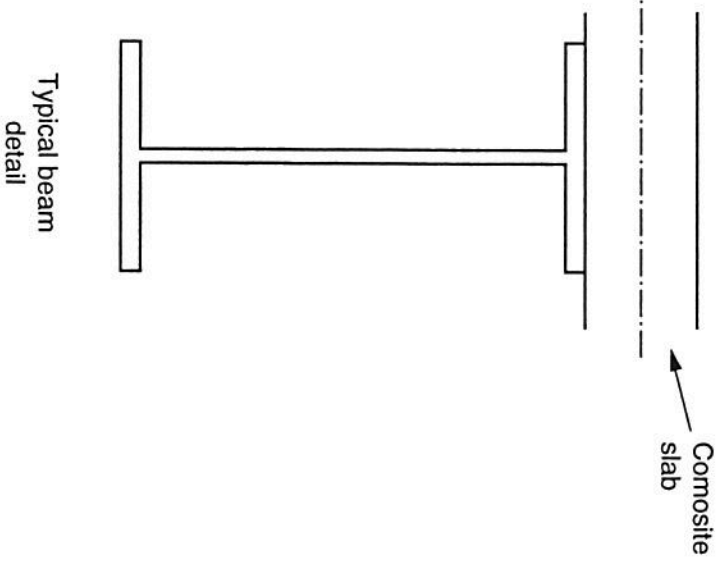
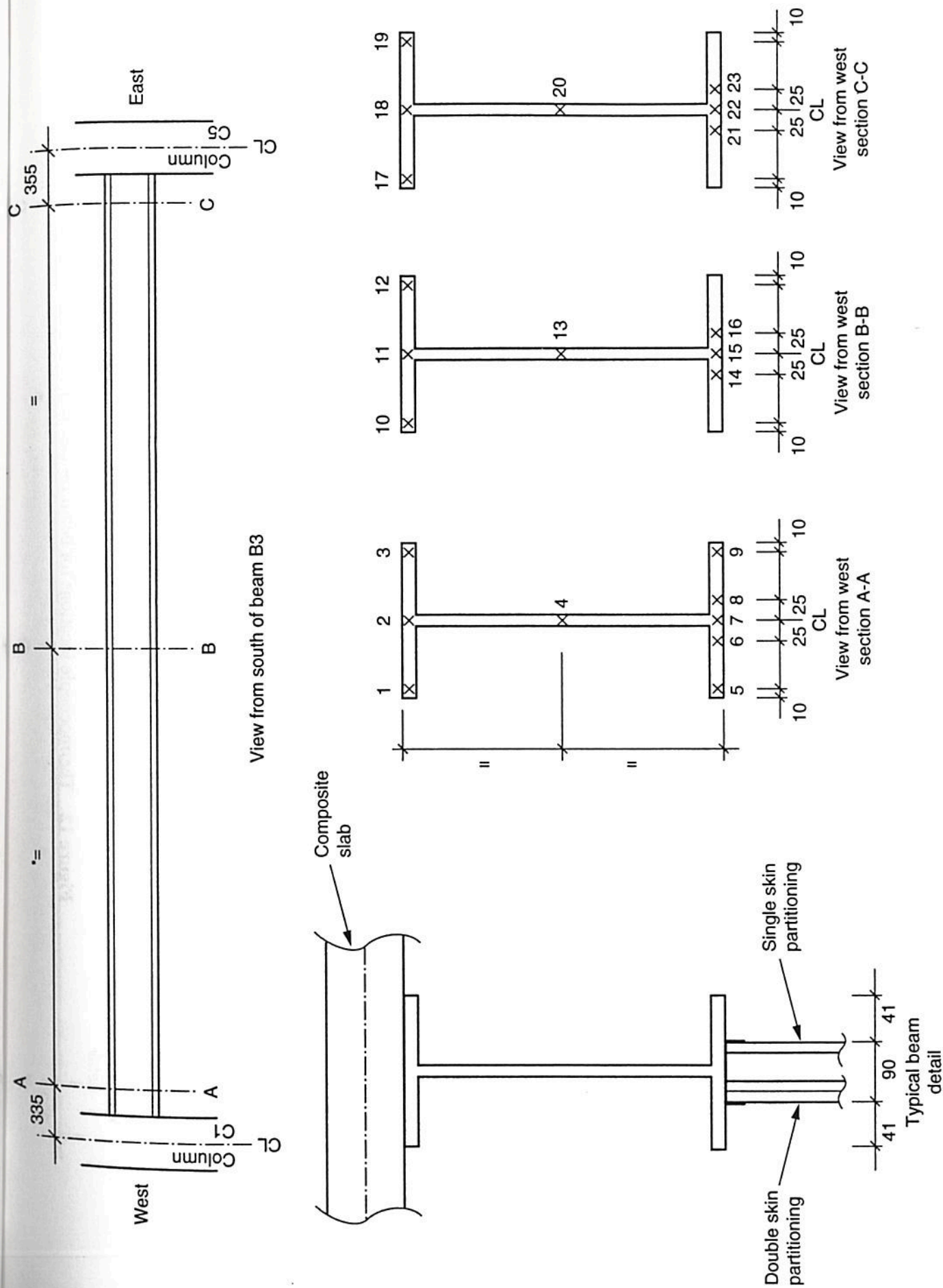


Figure 10 Thermocouple locations for beam B2 ( $3/4E-3/4F$ )



**Figure 11** Thermocouple locations for beam B3 (E3-F3)

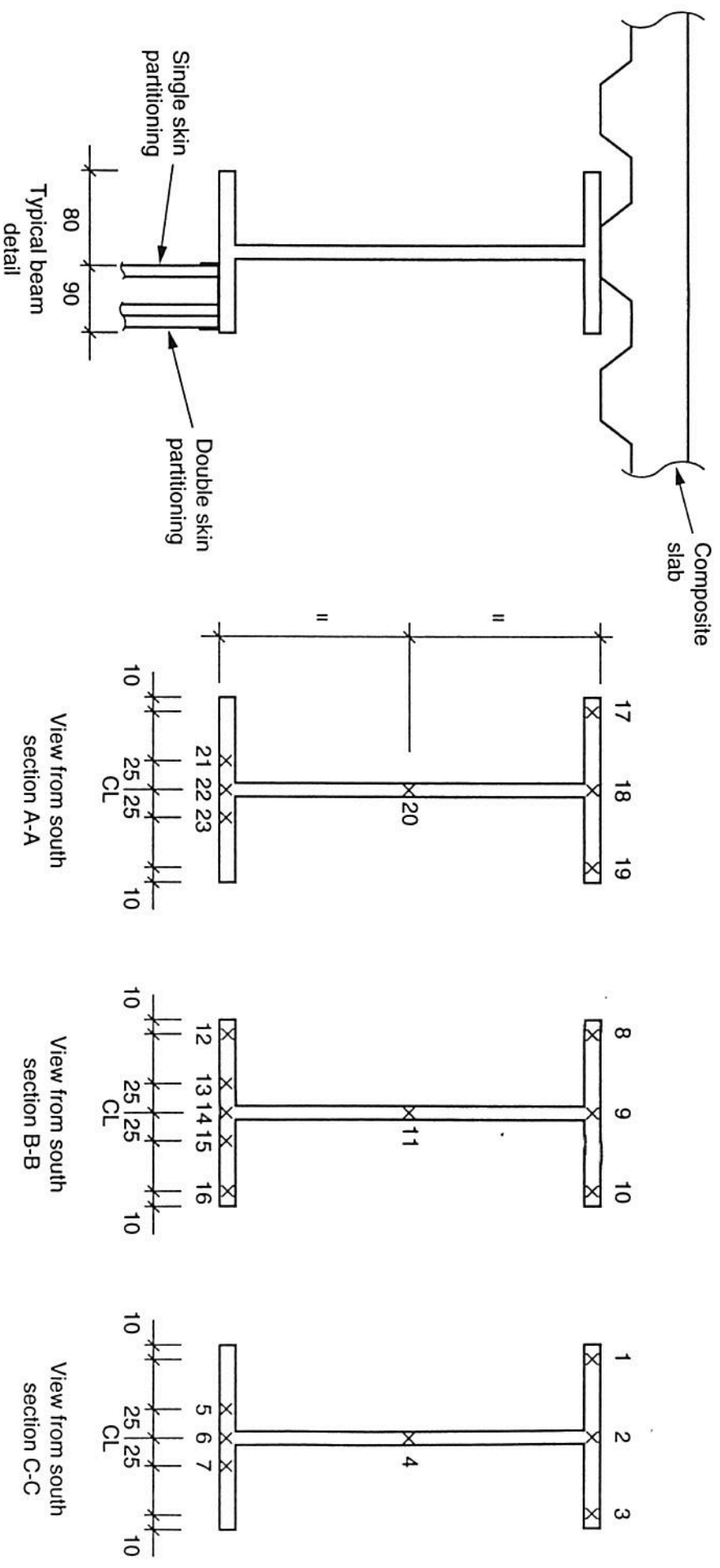
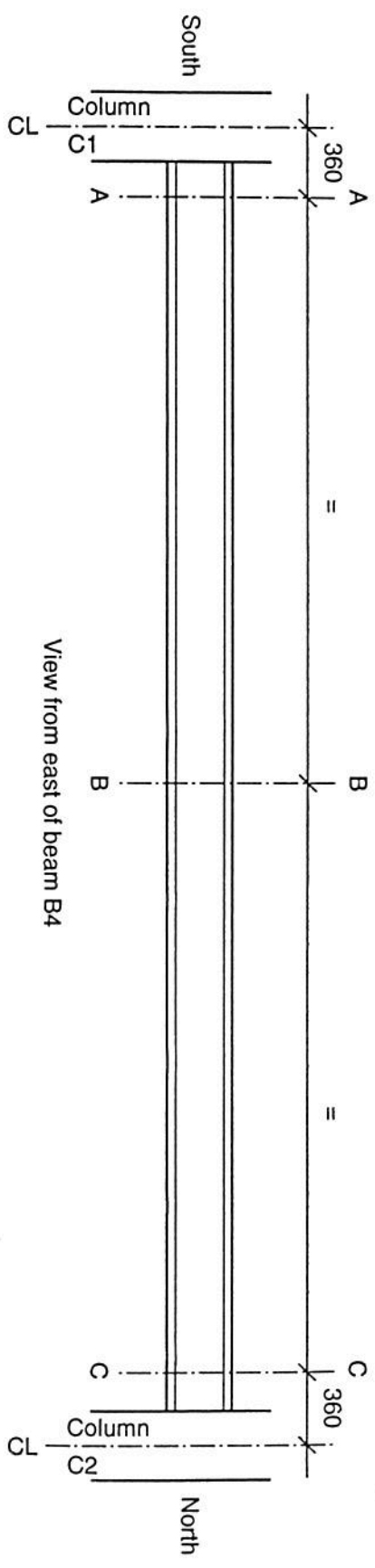


Figure 12 Thermocouple locations for beam B4 (E3-E4)

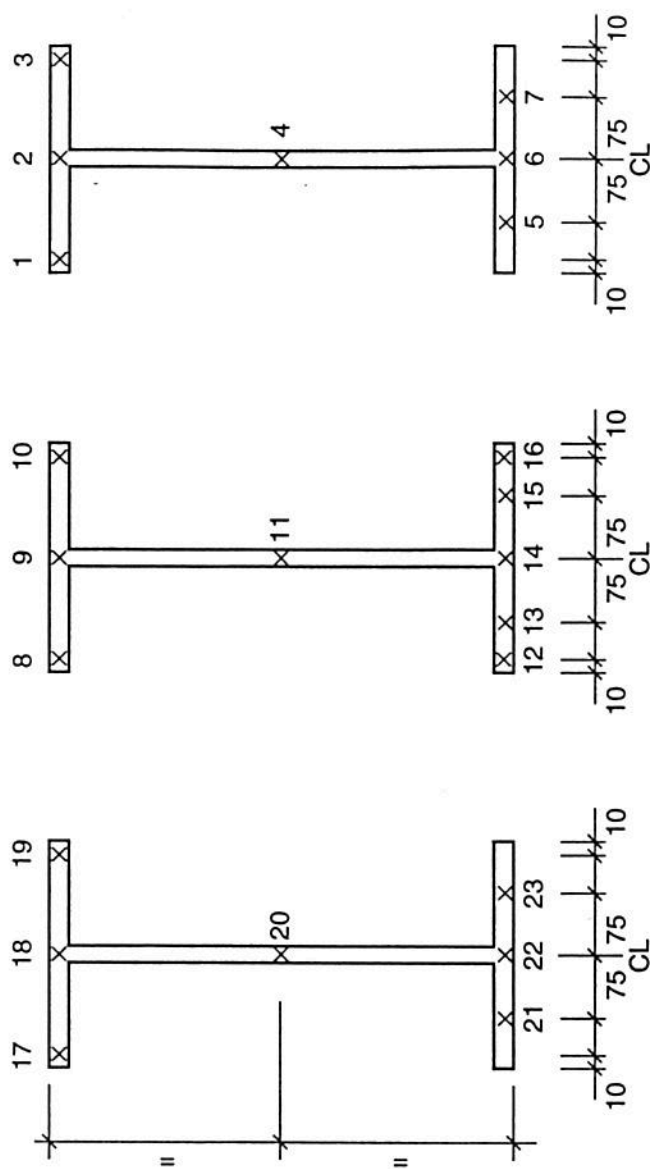
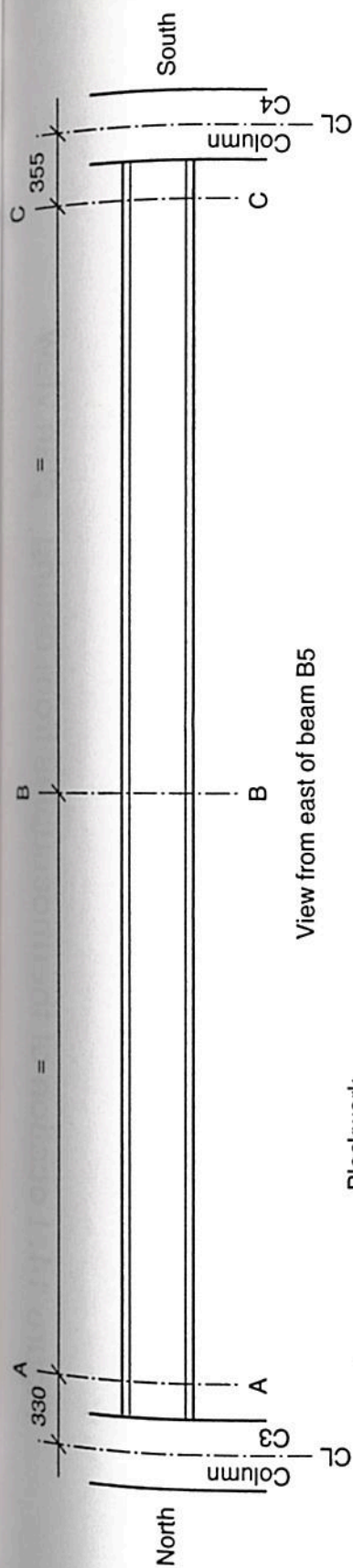
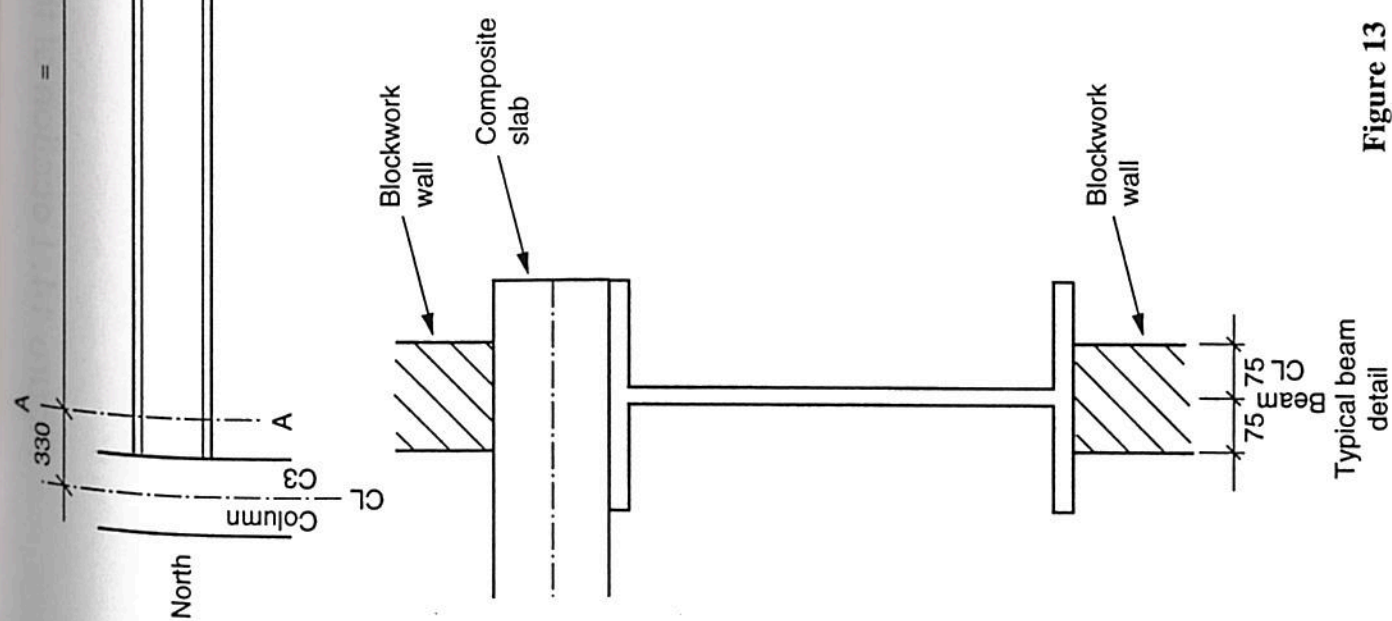


Figure 13 Thermocouple locations for beam B5 (F3-F4)



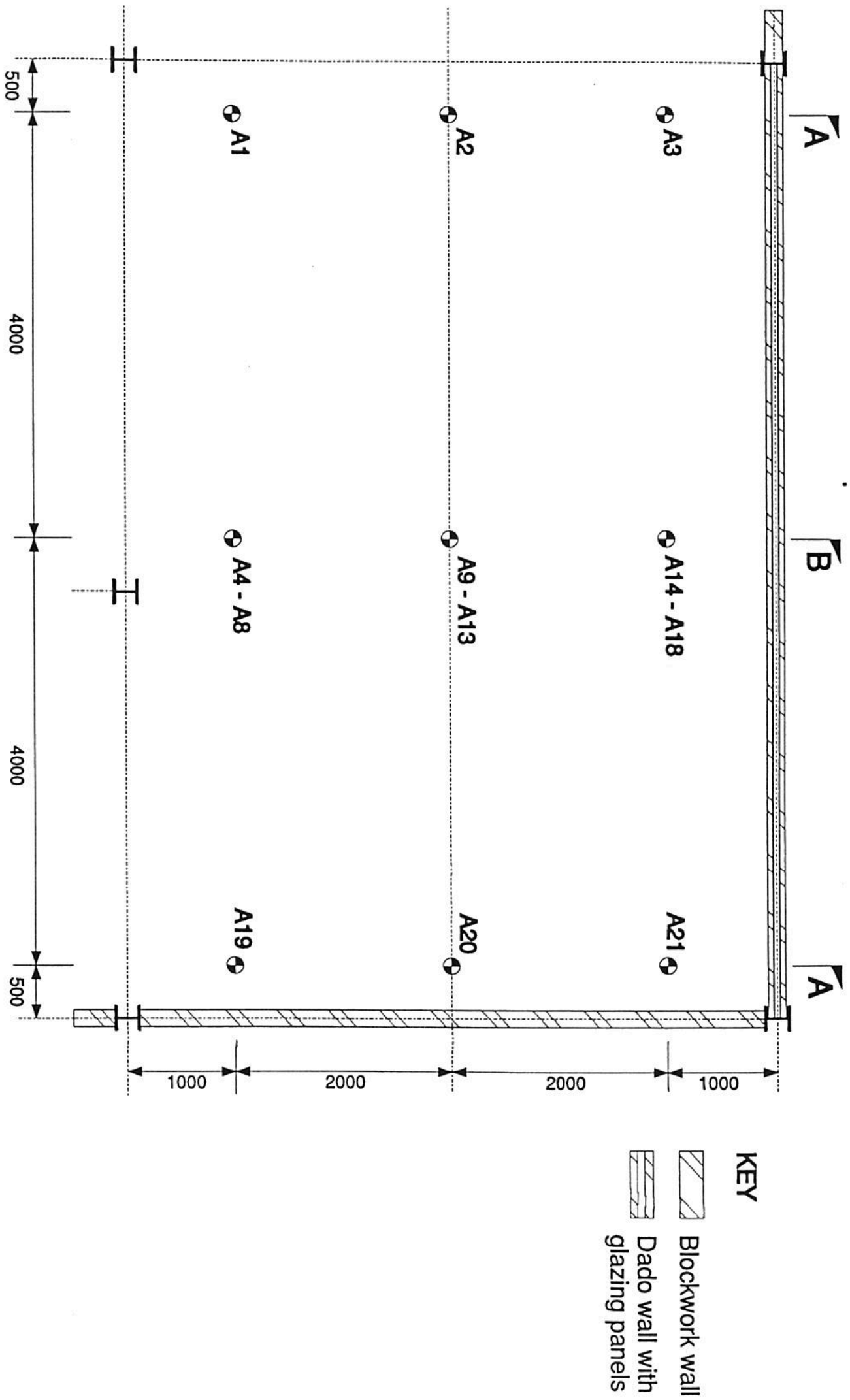
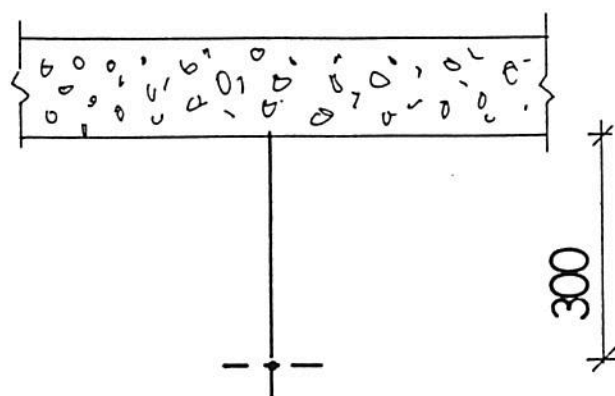
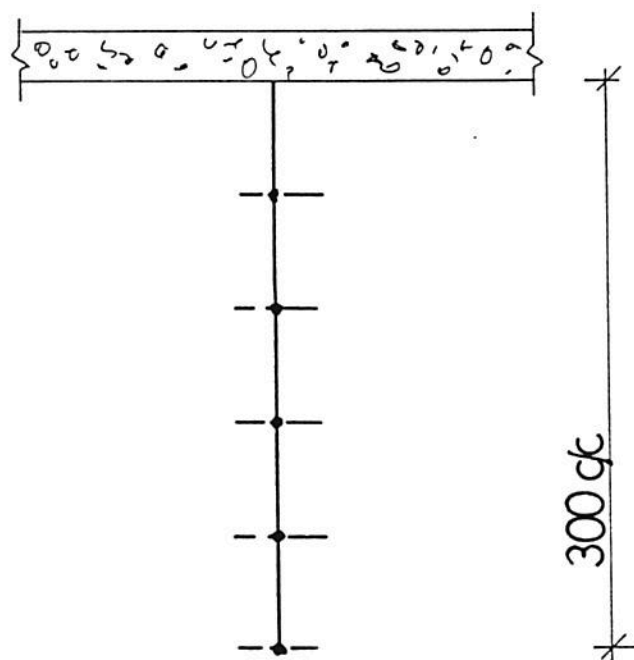


Figure 14: Location of thermocouples from ceiling - plan view





SECTION A



SECTION B

FIG 15 LOCATION OF THERMOCOUPLES  
FROM CEILING - ELEVATION VIEW

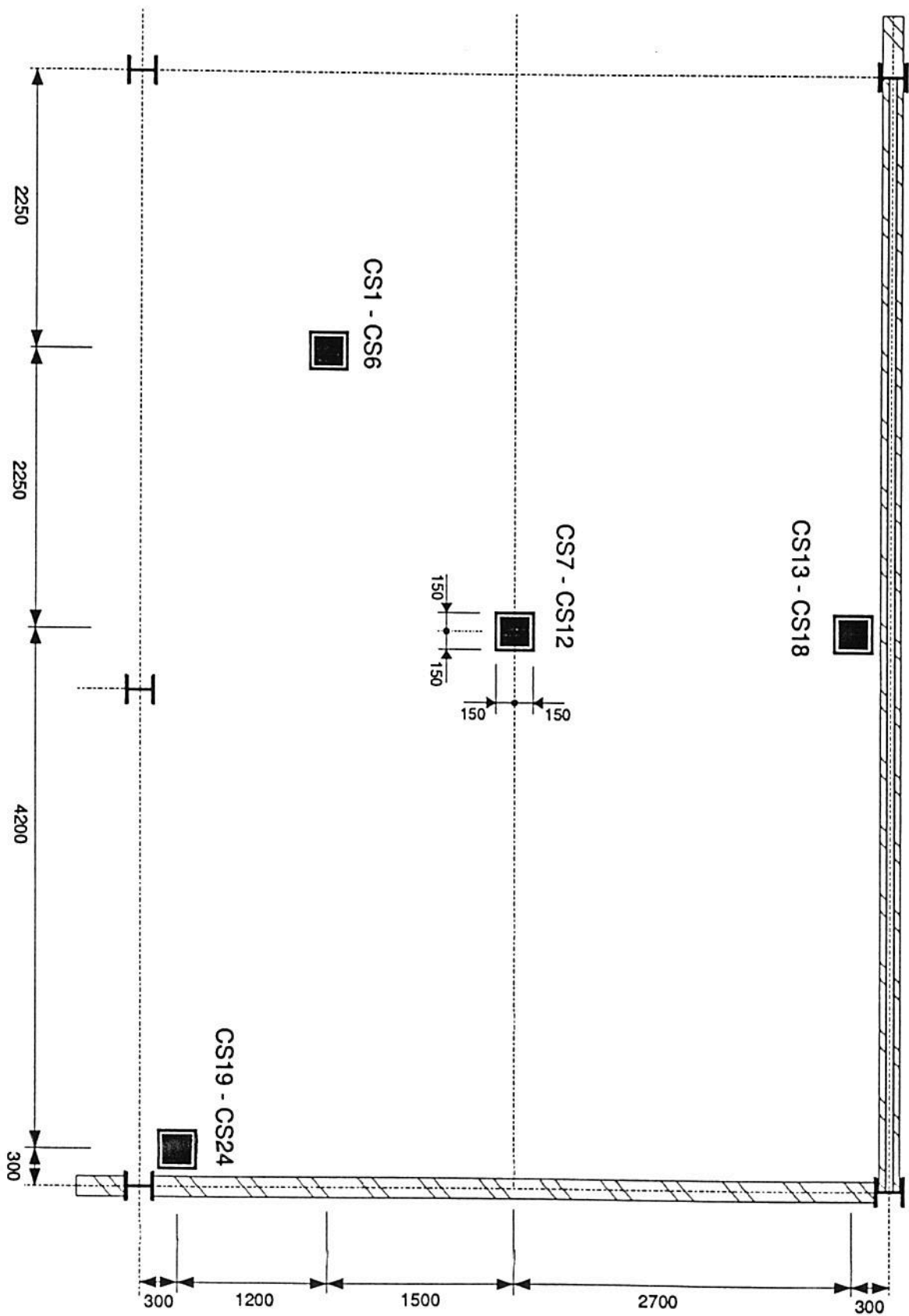


Figure 16: Instrumented cut-outs, 3rd floor

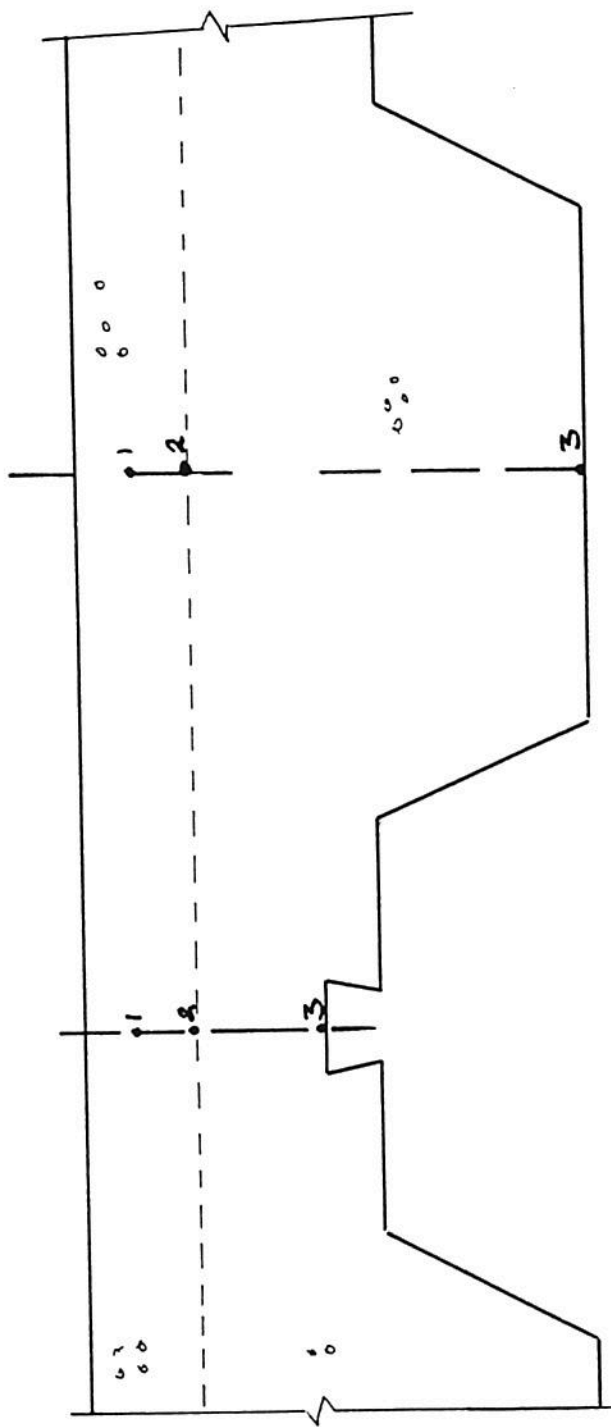
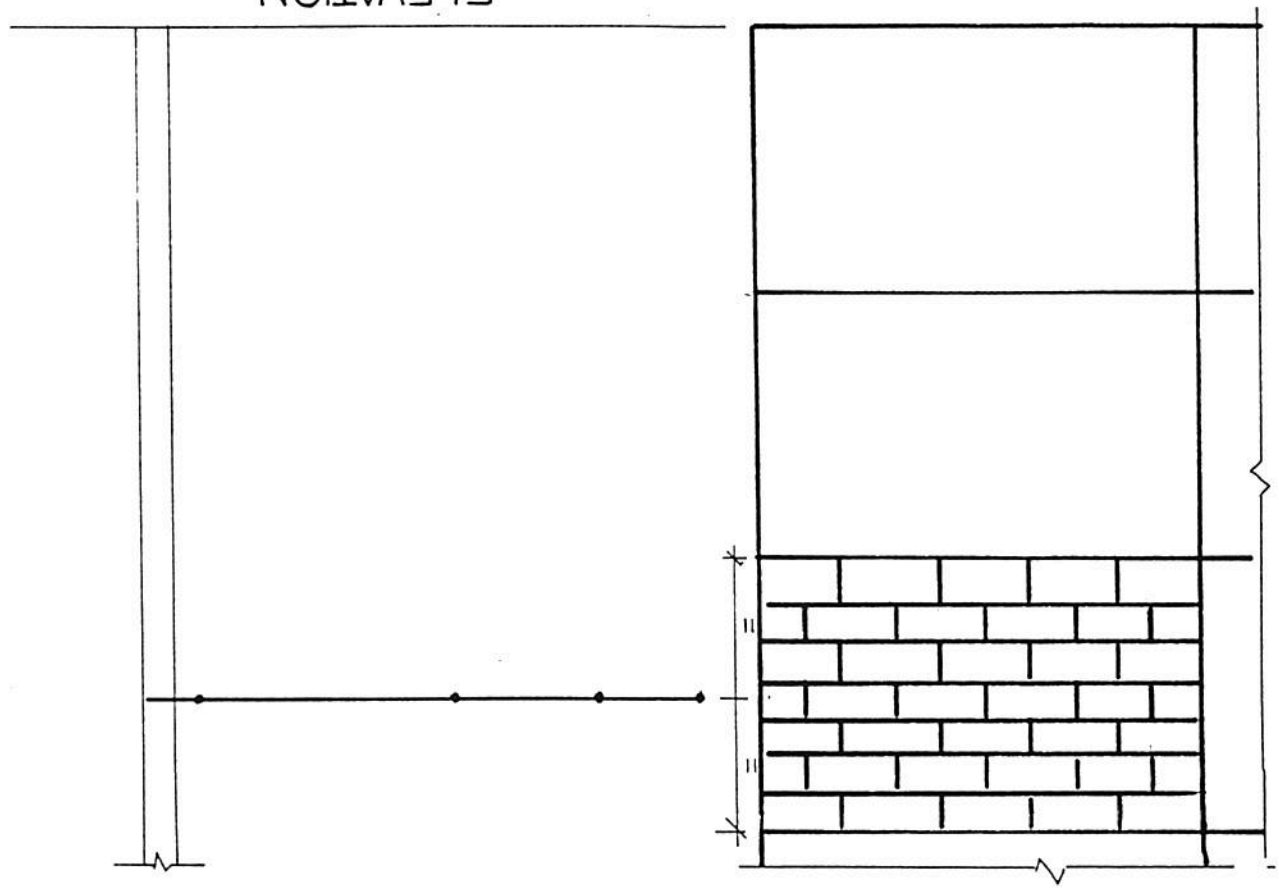


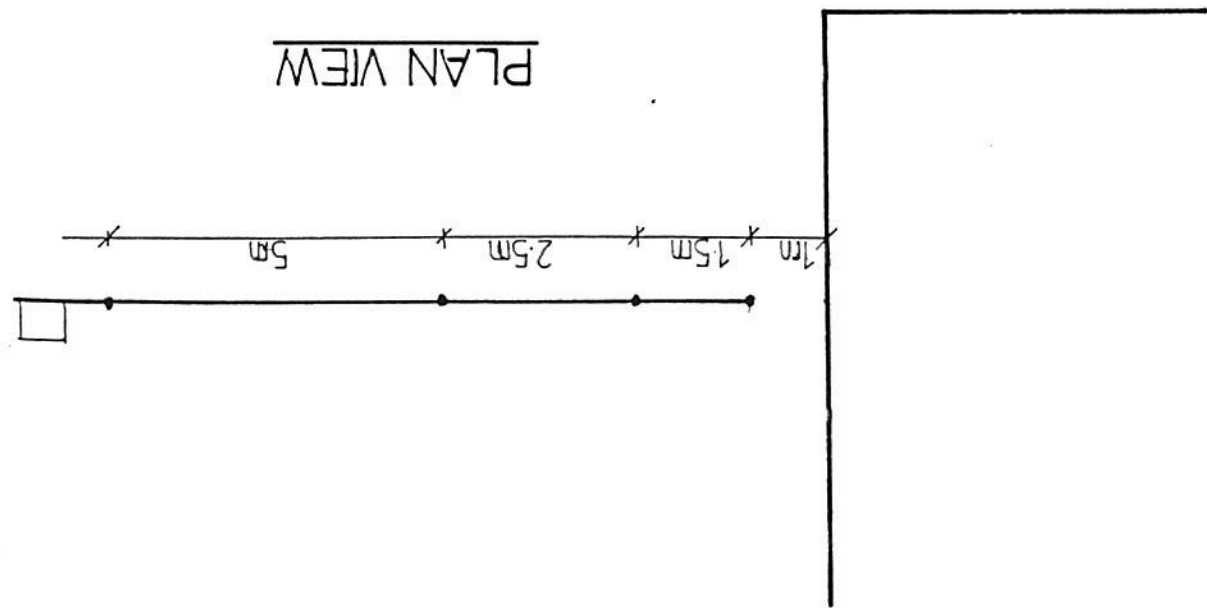
FIG 17 CONCRETE SLAB  
THERMOCOUPLE POSITIONS

FIG 18 THERMOCOUPLES  
POSITIONS AWAY FROM COMPARTMENT

ELEVATION



PLAN VIEW



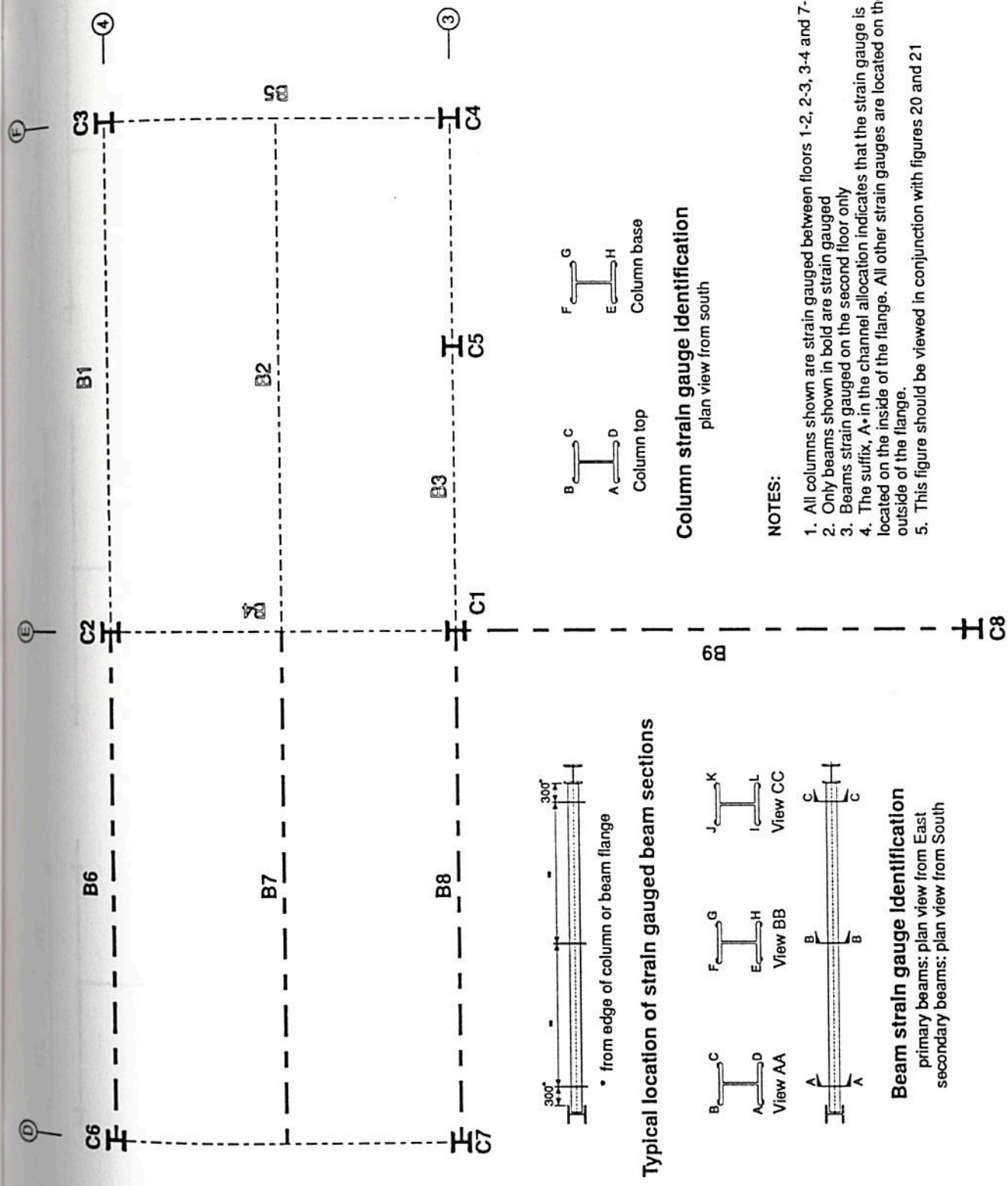
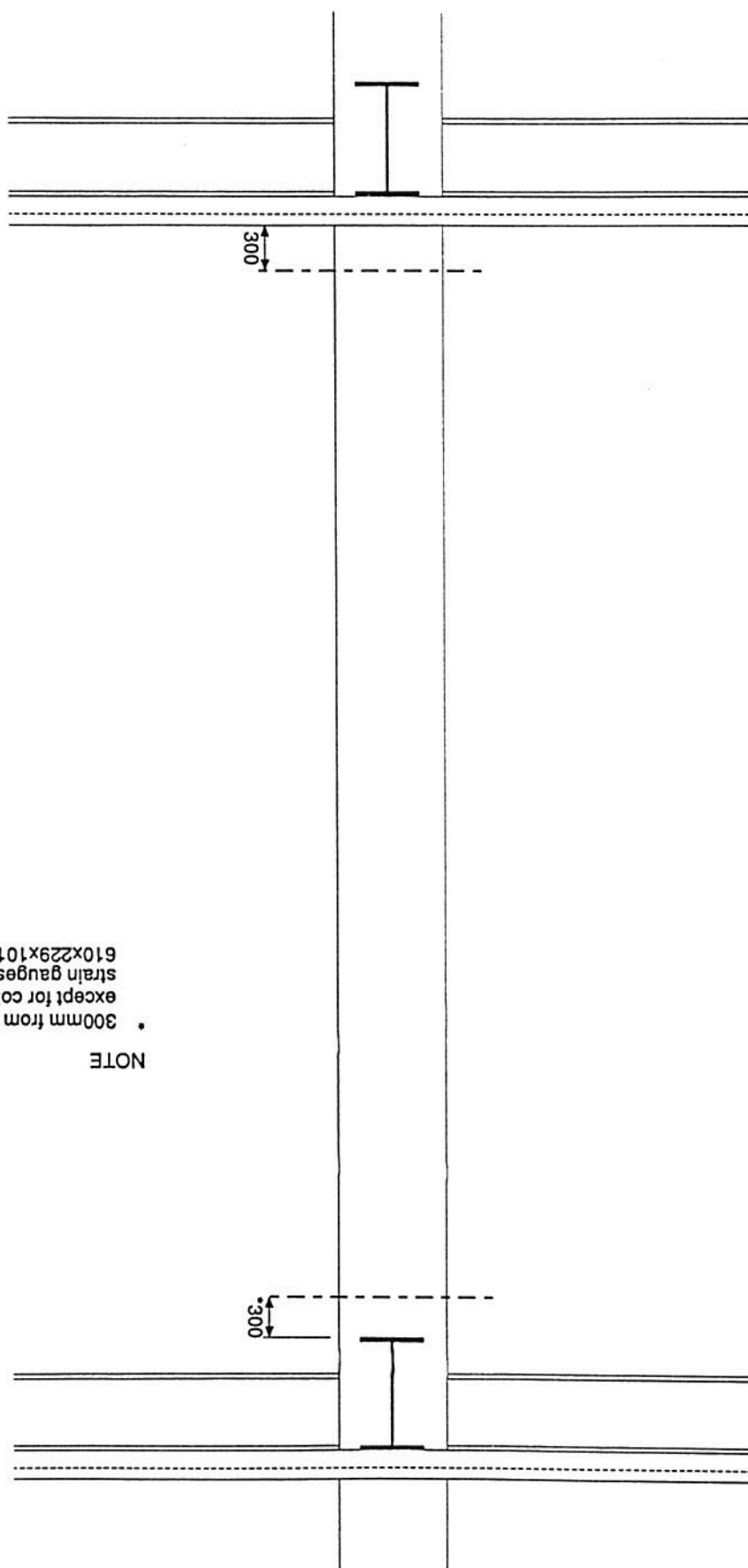


Figure 19 Strain gauge location and identification

Figure 20 Strain gauged sections, columns C1 - C4 and C6 - C8



NOTE

- 300mm from underside of deepest beam except for columns C1 and C8 where strain gauges are 100mm below the 610x229x101 UB.



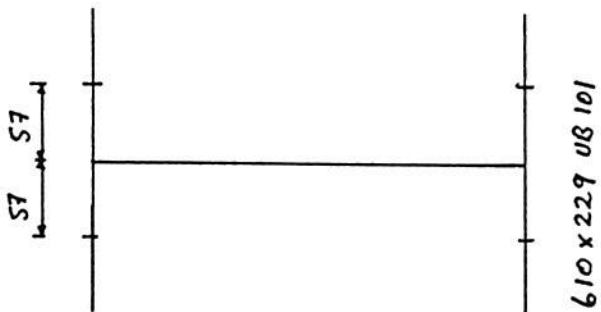
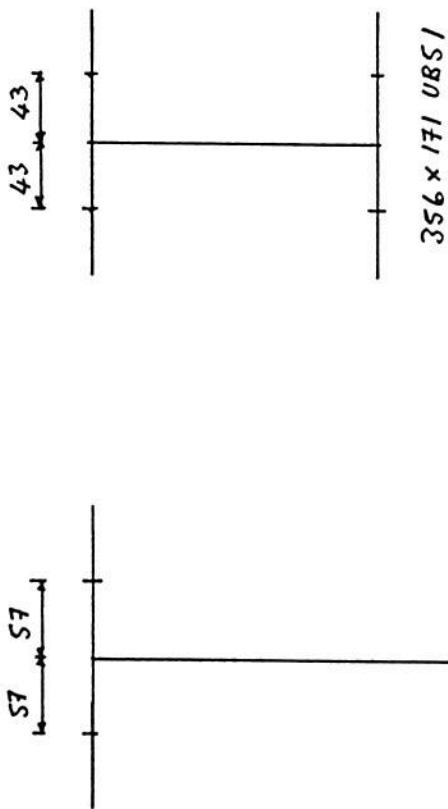
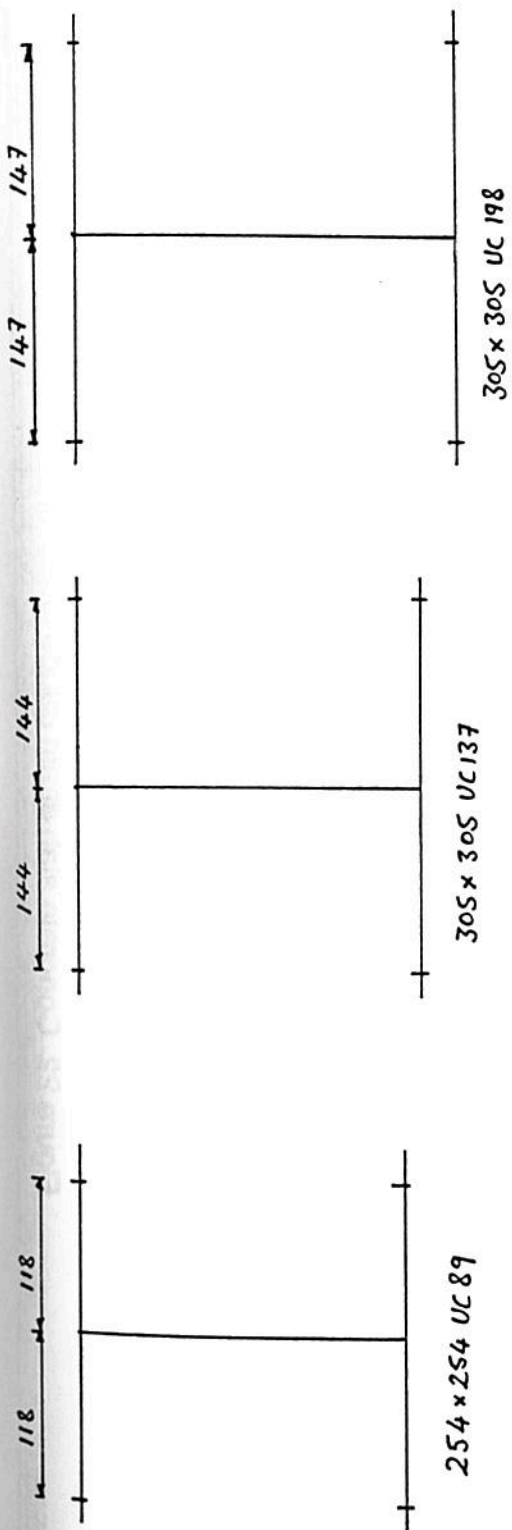


Figure 21 Strain Gauge Locations

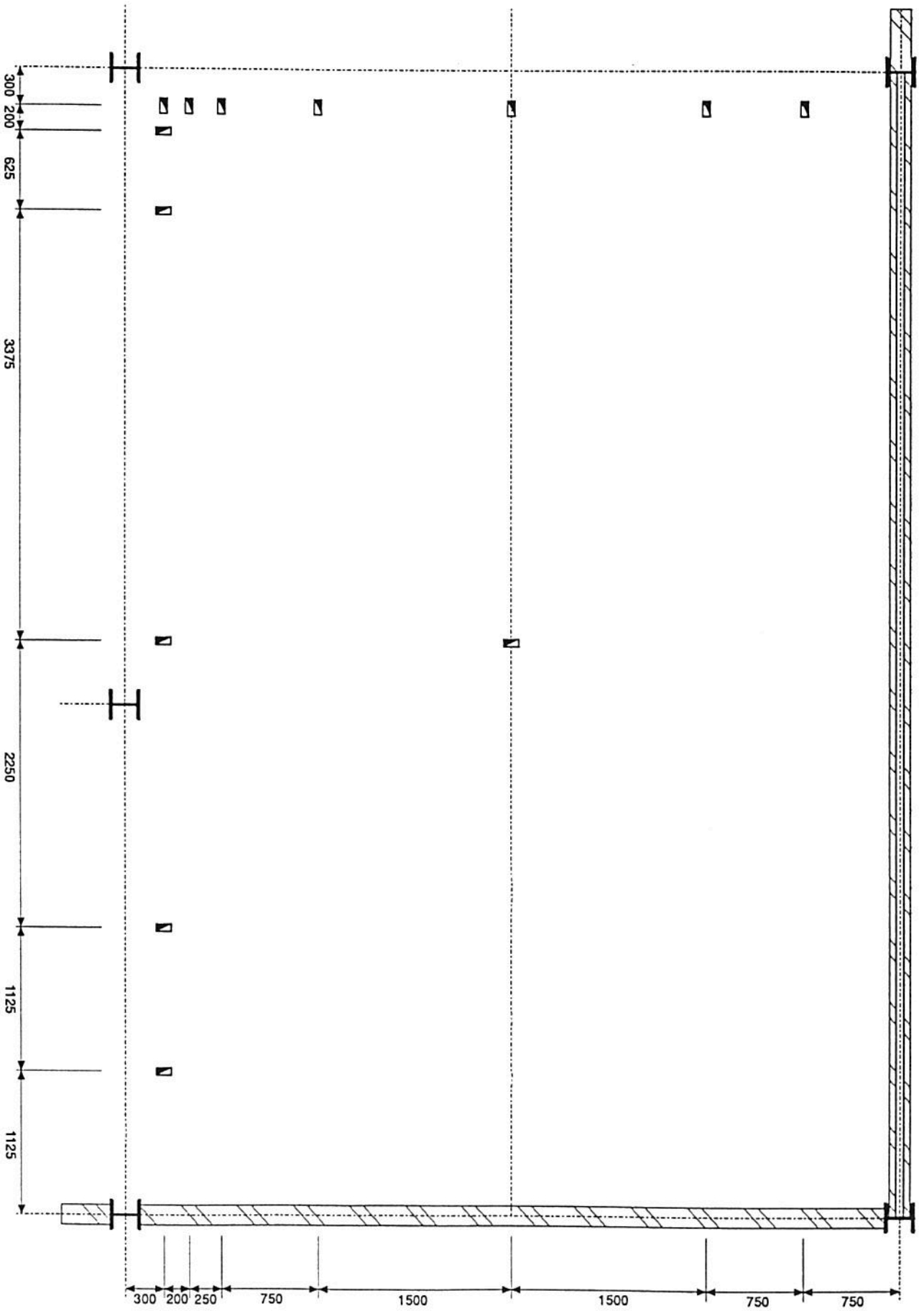


Figure 22 Concrete slab strain gauge locations

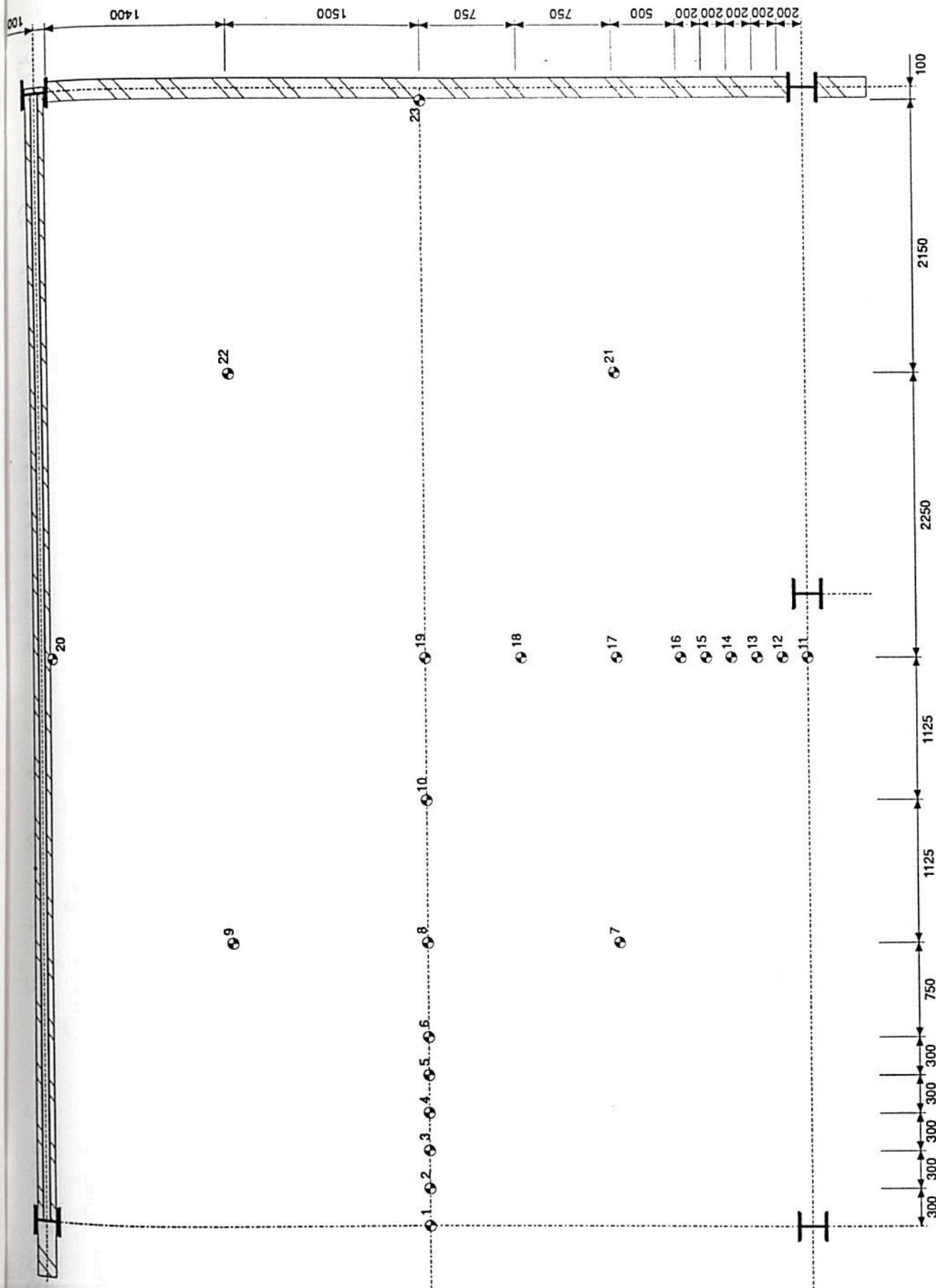
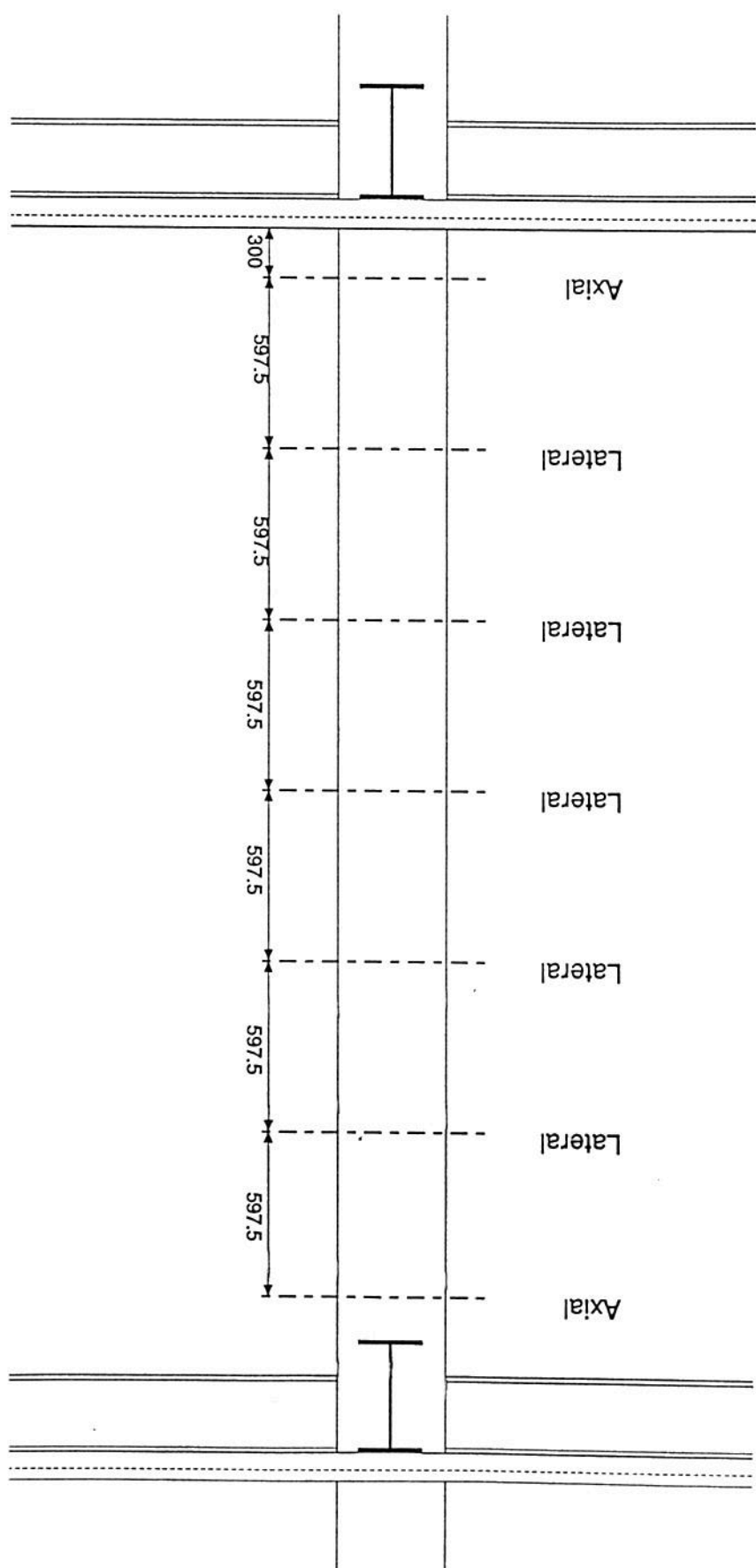


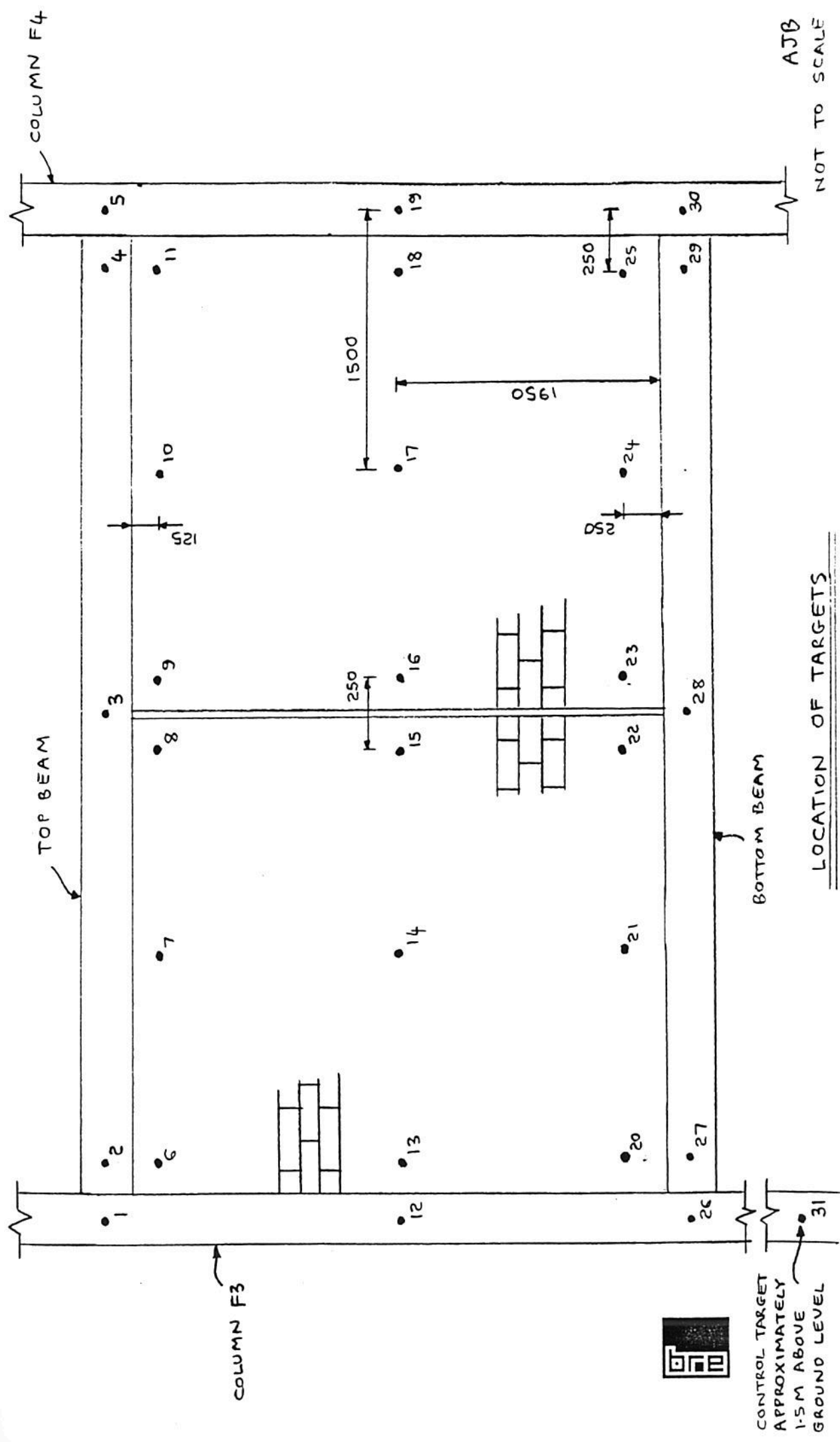
Figure 23 Third floor slab displacements

Figure 24 Lateral and axial displacement positions, columns C1 and C2



3D-Laser Survey System Monitoring of End Wall Movement During The  
 Corner Room Fire Test at Cardington, 23/11/95

Figure 25



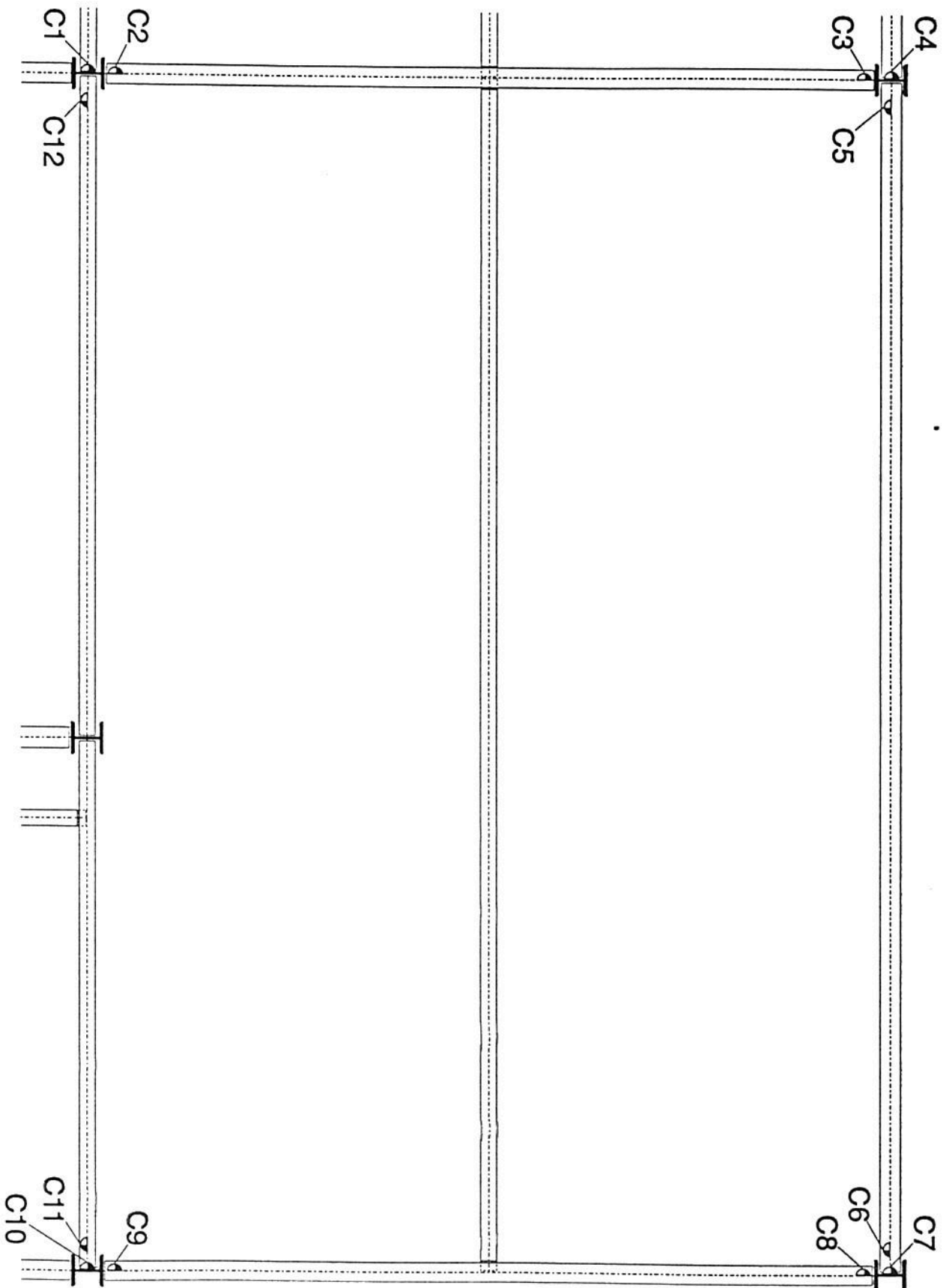


Figure 26 Rotation gauge positions



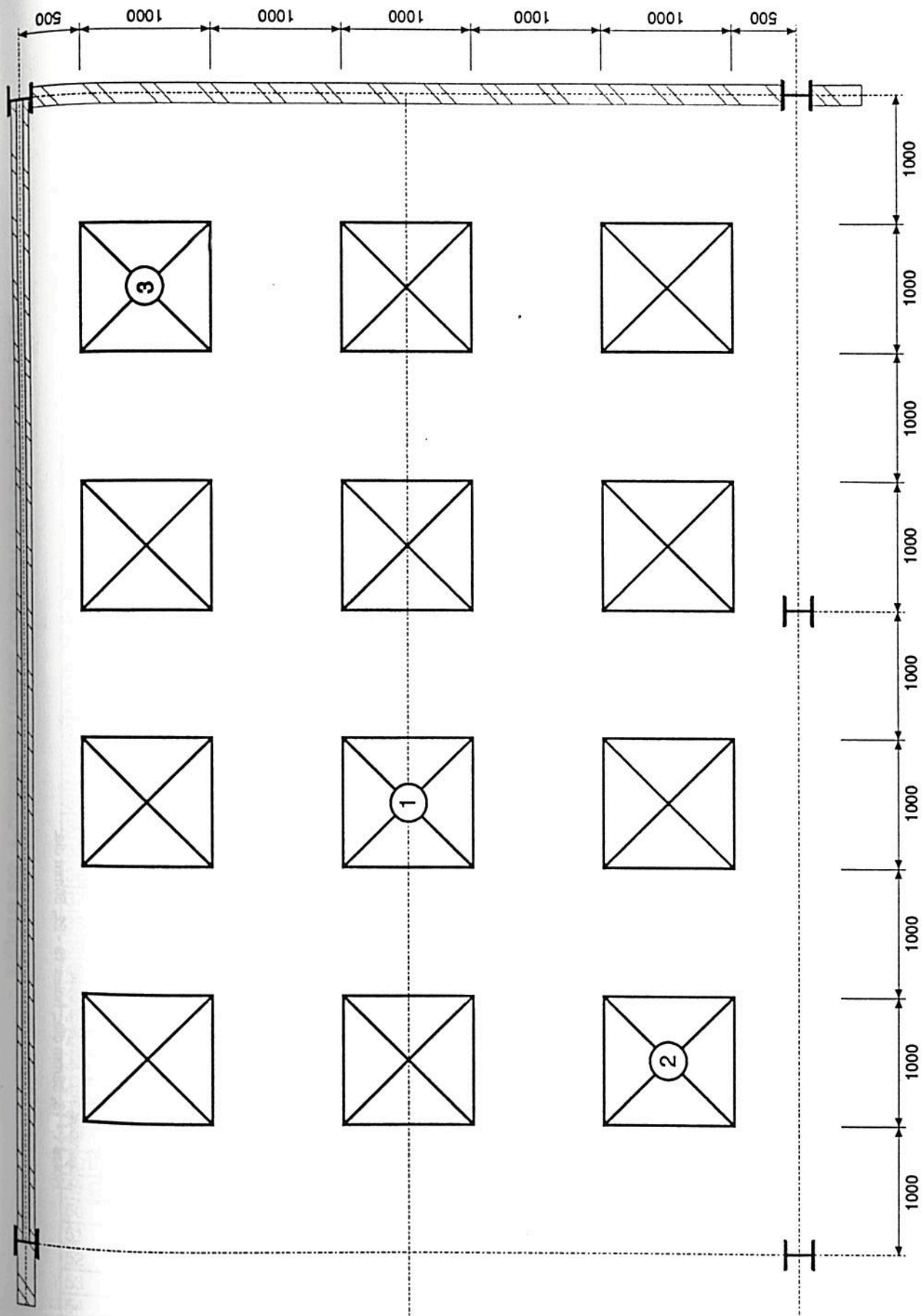


Figure 27 Crib layout and load cells to monitor weight loss



**Figure 28** Position of holes cored in the composite slab