

# FIRE PERFORMANCE OF EXTERNAL THERMAL INSULATION FOR WALLS OF MULTISTOREY BUILDINGS

THIRD EDITION

Sarah Colwell and Tony Baker



bretrust

## **DISCLAIMER**

Please note this edition of BR135 has not been reviewed since the publication of the 2020 versions of BS 8414 Parts 1 & 2. As such, the 3rd edition of BR135 cannot be used for classification with the BS 8414 Parts 1 & 2 2020 published versions.

BRE has agreed with BSI that BSI takes ongoing responsibility for the publication for the classification of fire performances associated with the BS 8414 Parts 1 & 2 standards published from 2020 onwards.

---

# FIRE PERFORMANCE OF EXTERNAL THERMAL INSULATION FOR WALLS OF MULTISTOREY BUILDINGS

Third edition

Sarah Colwell and Tony Baker



bretrust

---

This work has been funded by BRE Trust. Any views expressed are not necessarily those of BRE Trust. While every effort is made to ensure the accuracy and quality of information and guidance when it is first published, BRE Trust can take no responsibility for the subsequent use of this information, nor for any errors or omissions it may contain.

The mission of BRE Trust is 'Through education and research to promote and support excellence and innovation in the built environment for the benefit of all'. Through its research programmes BRE Trust aims to achieve:

- a higher quality built environment
- built facilities that offer improved functionality and value for money
- a more efficient and sustainable construction sector, with
- a higher level of innovative practice.

A further aim of BRE Trust is to stimulate debate on challenges and opportunities in the built environment.

BRE Trust is a company limited by guarantee, registered in England and Wales (no. 3282856) and registered as a charity in England (no. 1092193) and in Scotland (no. SC039320).

Registered Office: Bucknalls Lane, Garston, Watford, Herts WD25 9XX

BRE Trust  
Garston, Watford WD25 9XX  
Tel: 01923 664743  
Email: [secretary@bretrust.co.uk](mailto:secretary@bretrust.co.uk)  
[www.bretrust.org.uk](http://www.bretrust.org.uk)

BRE Trust and BRE publications are available from [www.brebookshop.com](http://www.brebookshop.com)

or  
IHS BRE Press  
Willoughby Road  
Bracknell RG12 8FB  
Tel: 01344 328038  
Fax: 01344 328005  
Email: [brepress@ihs.com](mailto:brepress@ihs.com)

Requests to copy any part of this publication should be made to the publisher:

IHS BRE Press  
Garston, Watford WD25 9XX  
Tel: 01923 664761  
Email: [brepress@ihs.com](mailto:brepress@ihs.com)

Printed on paper sourced from responsibly managed forests

The publisher accepts no responsibility for the persistence or accuracy of URLs referred to in this publication, and does not guarantee that any content on such websites is, or will remain, accurate or appropriate.

Extracts from BS 8414-1: 2002 are used with permission of BSI under licence number 2003DH0203. British Standards can be purchased from BSI Customer Services, 389 Chiswick High Road, London W4 4AL.  
Tel: 020 8996 9001; email: [cservices@bsi-global.com](mailto:cservices@bsi-global.com)

**BR 135**

**© Copyright BRE 1998, 2003, 2013**

**First published 1988**

**Second edition published 2003**

**Third edition published 2013**

**ISBN 978-1-84806-234-4**

# CONTENTS

---

<b>EXECUTIVE SUMMARY</b>	<b>v</b>
<b>1 INTRODUCTION</b>	<b>1</b>
1.1 Scope	2
1.2 Terms and definitions	2
<b>2 LEGISLATION</b>	<b>3</b>
2.1 Building Regulations	3
2.2 Property protection	3
<b>3 MECHANISMS OF FIRE SPREAD</b>	<b>4</b>
3.1 Initiation of the fire event	5
3.2 Fire breakout	5
3.3 Interaction with the external envelope	5
3.3.1 <i>Surface propagation</i>	5
3.3.2 <i>Cavities</i>	5
3.4 Fire re-entry	6
3.5 Fire service intervention	6
<b>4 CLADDING SYSTEMS: APPLICATION AND TYPES</b>	<b>7</b>
4.1 Materials for external finishes	7
4.2 Glazing	7
4.3 Curtain walling	7
4.4 Insulating materials	7
<b>5 EXTERNAL FINISH CONSTRUCTION TYPES</b>	<b>9</b>
5.1 Non-ventilated applied finishes	9
5.2 Ventilated applied finishes	9
<b>6 FIRE PERFORMANCE DESIGN PRINCIPLES FOR EXTERNAL CLADDING SYSTEMS</b>	<b>10</b>
6.1 General	10
6.2 Supporting substrates and frameworks	10
6.3 System-specific details: rendered systems	11
6.3.1 <i>Fixing details</i>	11
6.3.2 <i>Fire barriers</i>	11
6.3.3 <i>Insulation systems</i>	11
6.3.4 <i>Design principles for fire barriers: render systems</i>	12
6.4 Ventilated cavity systems	14
6.4.1 <i>Performance of materials in fire</i>	14
6.4.2 <i>Fire barriers: ventilated cavities</i>	14
<b>REFERENCES</b>	<b>16</b>

Cont'd . . .

---

<b>ANNEX A: PERFORMANCE CRITERIA AND CLASSIFICATION METHOD FOR BS 8414-1</b>	<b>17</b>
A1 Test method	17
A1.1 Principle of test	17
A1.2 Instrumentation	18
A2 Performance criteria and classification method	18
A2.1 Fire-spread start time, $t_s$	19
A2.2 External fire spread	19
A2.3 Internal fire spread	19
A2.4 Mechanical performance	20
A3 References	20
<b>ANNEX B: PERFORMANCE CRITERIA AND CLASSIFICATION FOR BS 8414-2</b>	<b>21</b>
B1 Test method	21
B1.1 Principle of test	21
B1.2 Instrumentation	22
B2 Performance criteria and classification method	23
B2.1 Fire-spread start time, $t_s$	23
B2.2 External fire spread	23
B2.3 Internal fire spread	24
B2.4 Mechanical performance	24
B3 References	24

---

## EXECUTIVE SUMMARY

---

The risk of fire spread in multistorey buildings is an issue of concern, and recent fires have continued to highlight this. Since the external cladding system of the building offers one potential route for fire spread through a multistorey building there is a need for guidance to address these concerns. This latest edition of BR 135 – *Fire performance of external thermal insulation for walls of multistorey buildings* presents revised guidance that, while continuing to address the principles and design methodologies related to the fire-spread performance characteristics of non-loadbearing external cladding systems, also considers the changing drivers in this market, such as the recent increase in the new-build market for these types of system, and increasing thermal performance requirements. This new edition of BR 135 seeks to bring together the experience gained in this area by updating the guidance on external fire performance for the materials and technologies now used in the construction of external cladding systems.

The first edition of BR 135 was published in 1988 in response to the increasing use of thermal insulation as part of refurbishment programmes on existing multistorey residential tower blocks. The guidance presented detailed design solutions based on the range of products in the marketplace at the time. It is an interesting document to

review when considering the current levels and types of thermal insulation system employed 25 years later, and being addressed by the third edition of this document.

The illustrations and scenarios presented in this current edition are based on typical examples of current practice, but, as has already been identified, this field is subject to rapidly changing designs and materials, and so this guidance focuses on the issues surrounding the topic, to enable designers and end users to understand better the parameters impacting on the fire-safe design and construction of external cladding systems.

The third edition also consolidates the fire performance classification systems for the full-scale fire tests in the BS 8414 series and found in Annex A of the second edition and Annex B, which was published as Digest 501, into a single document.

As part of the revision process for this document, a consultation exercise was undertaken with the key stakeholders to try to ensure that their experiences and issues in this rapidly changing market were addressed. The level of engagement and support from these stakeholders has been encouraging, and their input is reflected in the increasing range of systems identified and described in this third edition of the document, which we hope will continue to provide useful guidance in this field.

# 1 INTRODUCTION

The first edition of BR 135 – *Fire performance of external thermal insulation for walls of multistorey buildings* was published in 1988<sup>[1]</sup> in response to the increasing use of thermal insulation as part of refurbishment programmes on existing multistorey residential tower blocks. The guidance presented detailed design solutions based on the range of products in the marketplace at the time. It is an interesting document to review when considering the current levels and types of thermal insulation system employed 25 years later, and being addressed by the 3rd edition of this document.

At the time that the first edition was produced, there was no standard full-scale fire test available, and the test work behind the guidance was based on a single-faced, large-scale test facility similar to the test facility that now forms the basis of the BS 8414 test series<sup>[2,3]</sup>, but without the wing return wall.

During this period a fire occurred in a refurbished block of residential flats in Liverpool. The Knowsley Heights fire in 1991 (Figure 1) suggested that a full-scale fire test method was necessary to fully understand the overall fire performance of the complete system as

installed in these applications, using a representative fire scenario rather than relying solely on an elemental approach to try to control the overall fire performance of the system.

Additionally, the range of materials and potential design solutions available in the market was beginning to change, and was falling outside the range of guidance available in the first edition. As a result of this need to review the guidance and develop a full-scale test method, the then Department of the Environment worked with industry in a collaborative project to develop a full-scale test method, which was subsequently published by BRE in 1999 as Fire Note 9 – *Test method to assess the fire performance of external cladding systems*<sup>[4]</sup>.

In June 1999, a fatal fire occurred in a multistorey residential housing block in Scotland (Figure 2). A resulting parliamentary inquiry was undertaken by the Environment Subcommittee of the Environment, Transport and Regional Affairs Committee to investigate the potential risk of fire spread in buildings by way of external cladding systems. As part of their recommendations<sup>[5]</sup>, the subcommittee asked that the relevant guidance in

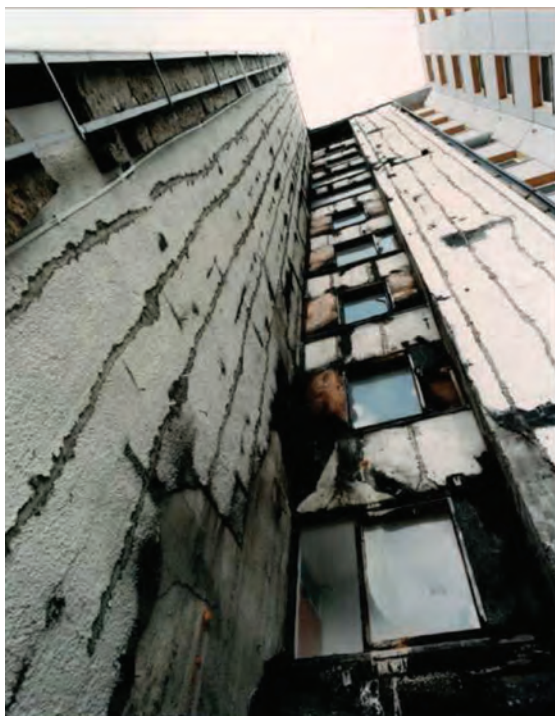


Figure 1: Knowsley Heights



# OTHER TITLES FROM IHS BRE PRESS



## **Design fires for use in fire safety engineering**

Learn how to define a robust and appropriate design fire for use in the fire safety engineering design of a building. This guide presents 29 experimental fires that cover a range of scenarios, and provides data that originate from actual fire tests.

*Ref. FB 29*



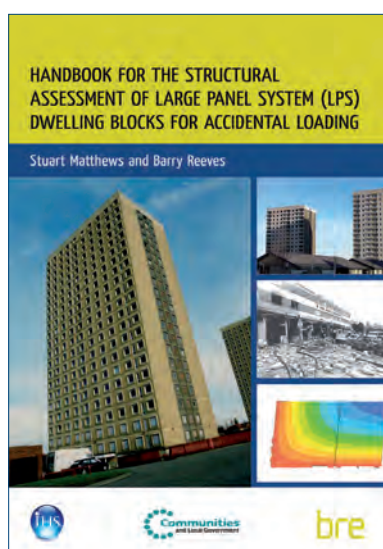
## **External fire spread**

Building separation and boundary distances

Understand the methods for calculating adequate space separation between buildings to ensure that fire spread to an adjacent building is sufficiently delayed for the Fire Service to arrive on site and take preventative action. This new edition of BR 187, in support of national building regulations, gives a range of calculation methods supported by illustrative examples and presents detailed analysis to the methods so that users can create their own fire engineering software.

*Ref. BR 187, 2nd edition*

*Publication due Autumn 2013*



## **Handbook for the structural assessment of large panel system (LPS) dwelling blocks for accidental loading**

Get new guidance on the structural assessment and strengthening options for large panel system (LPS) dwelling blocks, focusing primarily on their resistance to accidental loading associated with gas explosions.

For this class of building, this handbook:

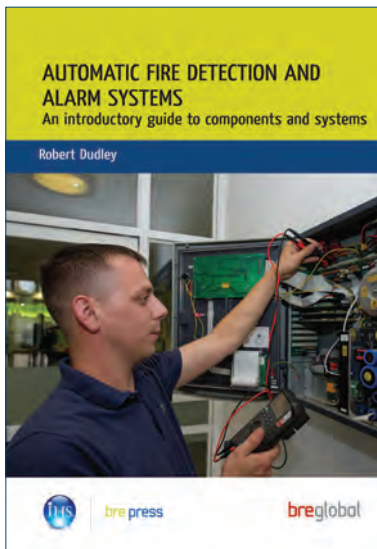
- defines the requirements and the criteria against which the results of a structural assessment should be judged
- gives guidance on how to undertake the structural assessments
- explains the risk environment
- details the historic background set in the contemporary philosophical context of the recently introduced structural Eurocodes.

*Ref. BR 511*

All titles are available in print and pdf format.

Order now @ [www.brebookshop.com](http://www.brebookshop.com) or **phone the IHS Sales Team on +44 (0) 1344 328038.**

# OTHER TITLES FROM IHS BRE PRESS

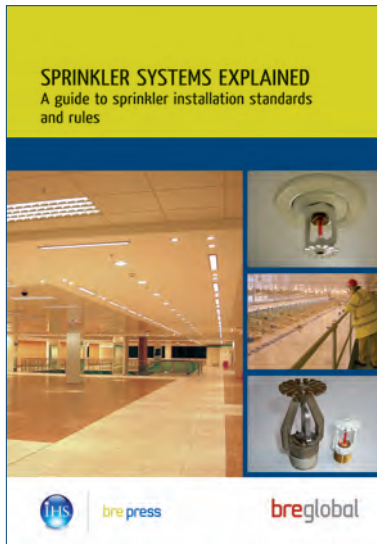


## **Automatic fire detection and alarm systems**

An introductory guide to components and systems

Get an overview of automatic fire detection and alarm systems used in commercial and industrial buildings: how they are designed, how you can manage them and how to ensure that all your regulatory requirements are met.

*Ref. BR 510*

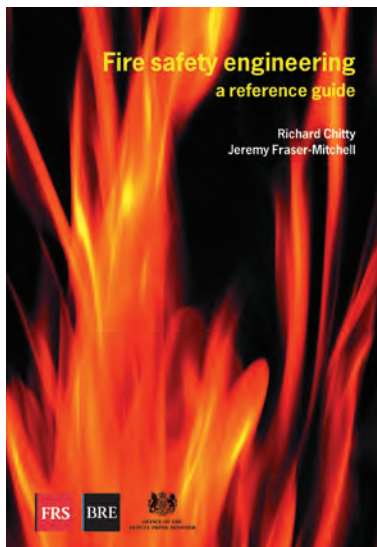


## **Sprinkler systems explained**

A guide to sprinkler installation standards and rules

Understand fire sprinkler installations and the LPC Rules to which they are designed. This guide demystifies the design and use of fire sprinkler installations and explains the engineering behind the rules and regulations and some common misunderstandings about sprinkler systems.

*Ref. BR 503*



## **Fire safety engineering**

A reference guide

Find out about key topics encountered in fire safety engineering and aspects that should be considered by designers, enforcers and other responsible persons.

*Ref. BR 459*

All titles are available in print and pdf format.

Order now @ [www.brebookshop.com](http://www.brebookshop.com) or phone the IHS Sales Team on +44 (0) 1344 328038.

## **FIRE PERFORMANCE OF EXTERNAL THERMAL INSULATION FOR WALLS OF MULTISTOREY BUILDINGS**

External cladding systems offer a potential route for fire spread through multistorey buildings. This third edition of BR 135 sets out the principles and design methodologies related to the fire spread performance characteristics of non-loadbearing cladding systems, and provides revised guidance in the light of the growing market for cladding systems and increasing thermal performance requirements. It also updates the guidance on fire performance of currently used materials and technologies.

The illustrations and scenarios given are based on typical examples of current practice, but, in view of the rapid changes in designs and materials, the guidance aims to enable designers to understand the parameters relating to fire safety design and construction of external cladding. It also consolidates the fire performance classification systems for full-scale fire tests in BS 8414.

### **RELATED TITLES FROM IHS BRE PRESS**

**HANDBOOK FOR THE STRUCTURAL ASSESSMENT OF LARGE PANEL SYSTEM (LPS)  
DWELLING BLOCKS FOR ACCIDENTAL LOADING**  
BR 511, 2012

**DESIGN FIRES FOR USE IN FIRE SAFETY ENGINEERING**  
FB 29, 2011

**CONCRETE STRUCTURES IN FIRE**  
Performance, design and analysis  
BR 490, 2007

**FIRE SAFETY OF CONCRETE STRUCTURES**  
Background to BS 8110 fire design  
BR 468, 2004

**FIRE SAFETY ENGINEERING: A REFERENCE GUIDE**  
BR 459, 2003



IHS BRE Press, Willoughby Road  
Bracknell, Berkshire RG12 8FB  
[www.brebookshop.com](http://www.brebookshop.com)  
**BR 135**

ISBN 978-1-84806-234-4



9 781848 062344